

10<sup>th</sup> Regional JODI Training Workshop

23-25 November 2014, Doha, Qatar

# Current JODI-Oil Data Situations in Sub Sahara and MENA Countries



# The latest JODI-Oil data (as of October 2014 update)



Algeria	AUG2014	Burundi	No participation
Bolivia	JUN2013	Equatorial Guinea	No participation
Egypt	JUL2014	Gambia	No participation
Ghana	Before JAN2002	Kenya	No participation
Iran	AUG2014	Niger	No participation
Iraq	AUG2014	South Sudan	No participation
Morocco	JUN2014	Sudan	No participation
Qatar	AUG2014		
Russia	AUG2014		
Saudi Arabia	AUG2014		
South Africa	JUL2014		
Tunisia	AUG2014		
UAE	FEB2014		
Venezuela	JUL2014		

# Country: Algeria

## Timeliness and completeness

### Timeliness

JAN-JUN 2014



JUL-Dec 2013



JAN-JUN 2013



JUL-DEC 2012



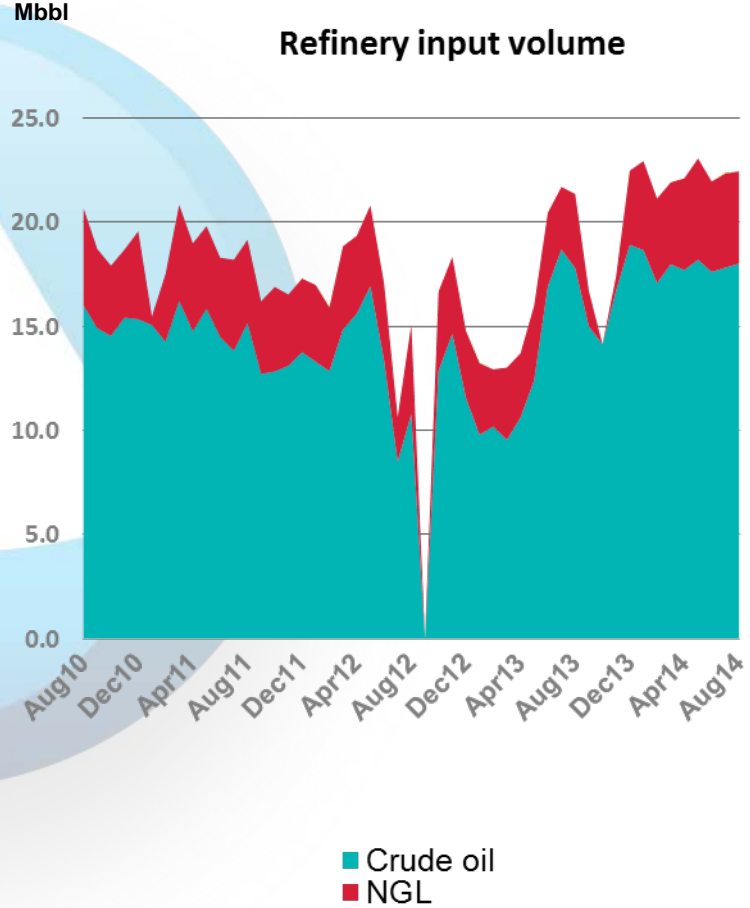
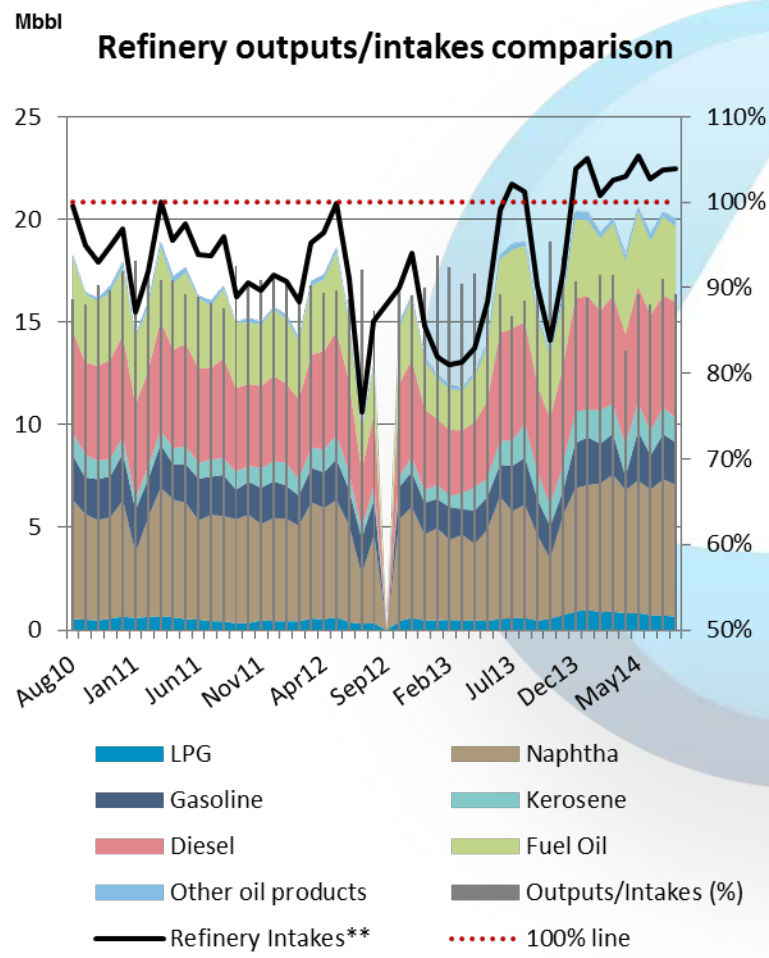
😊=Good, 😐=Fair, ☹=Poor

### Completeness

- Of the extended format (primary crude product table), no data reported on NGL and Other
- Of the extended format (oil product table), some flows of Naphtha are available
- Missing Sep 2012 data

# Country: Algeria

## Flow: Refinery

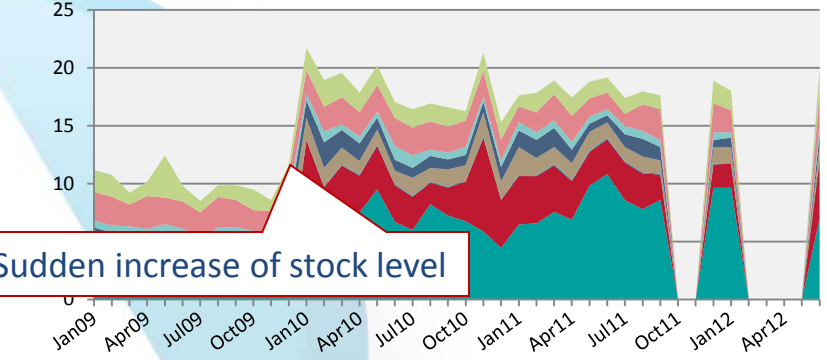


# Algeria

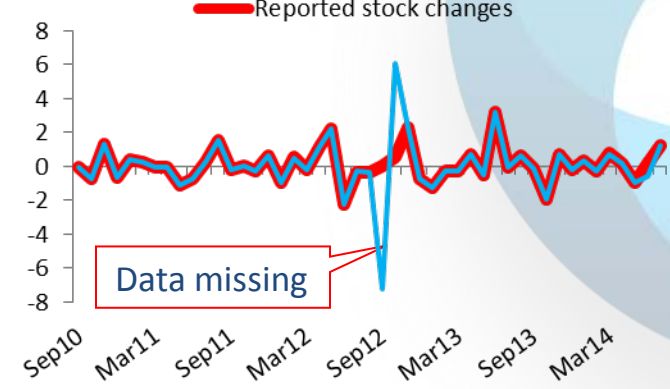
Mbbbl Stock data consistency (Crude+NGL+Other)



Mbbbl Stock level by product (from 8<sup>th</sup> Training workshop)

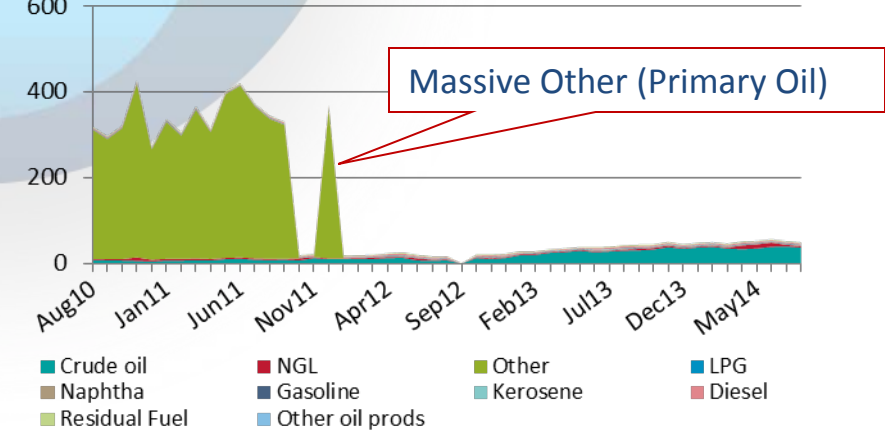


Mbbbl Stock data consistency (Total oil products)



- Crude oil
- NGL
- Other
- LPG
- Naphtha
- Gasoline
- Kerosene
- Diesel
- Residual Fuel
- Other oil prods

Mbbbl Stock level by product



# Country: Bolivia

## Timeliness and completeness

### Timeliness

JAN-JUN 2014



JUL-Dec 2013



JAN-JUN 2013



JUL-DEC 2012



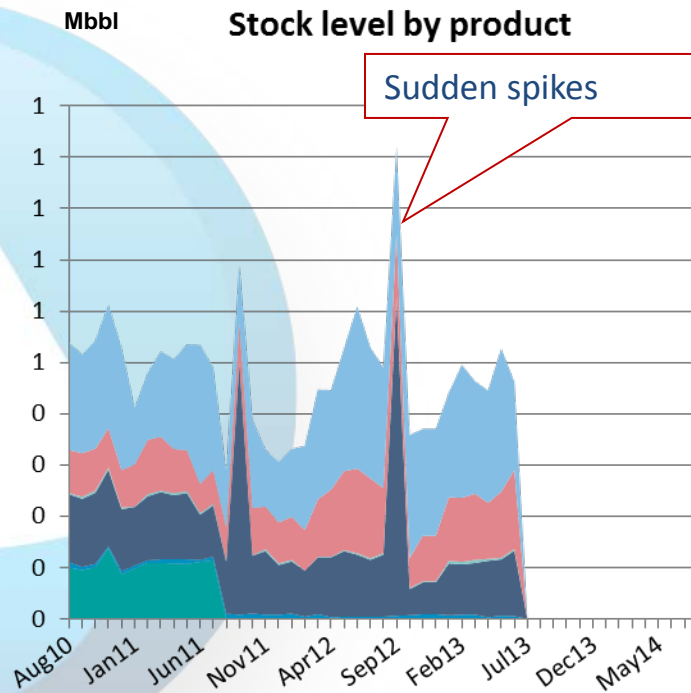
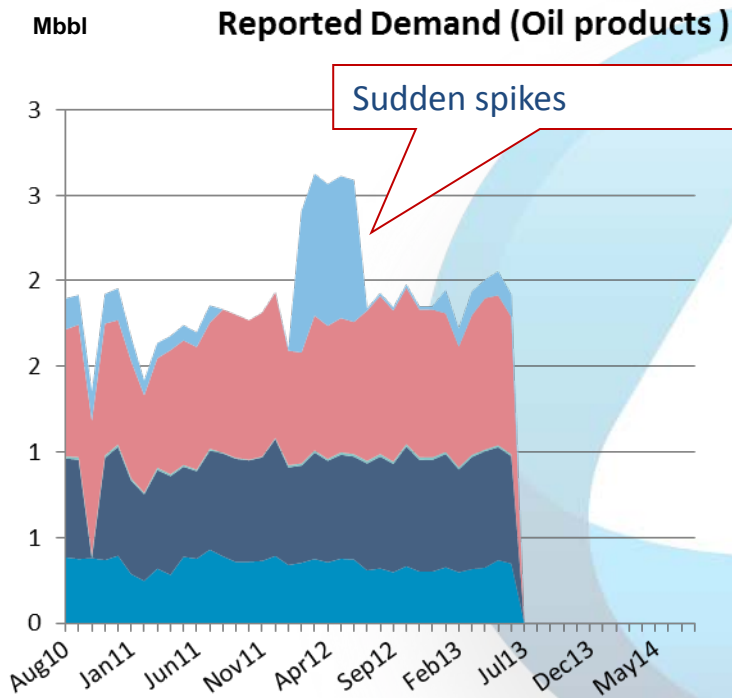
😊=Good, 😐=Fair, ☹=Poor

### Completeness

- Only Crude Oil Production and its Refinery Intake data available.
- No Naphtha, Jet Kerosene, Residual Oil data
- Apparent LPG misreporting (But probably due to inaccurate OLADE format)

# Country: Bolivia

## Flow: Demand, Stock Level



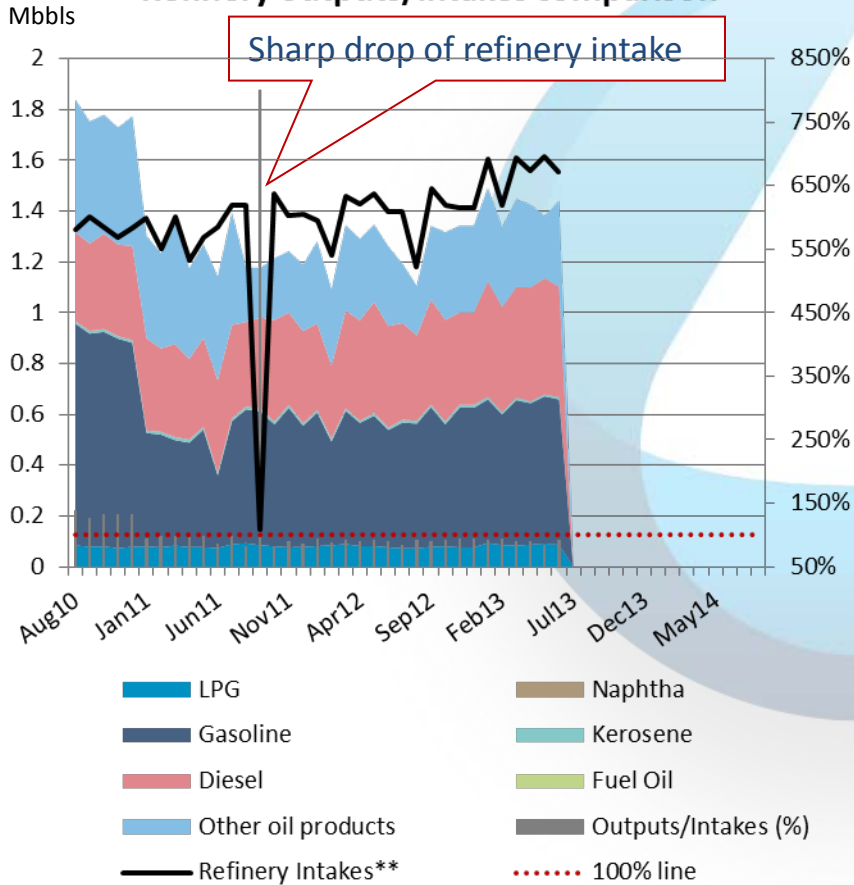
- LPG
- Naphtha
- Gasoline
- Kerosene
- Diesel
- Residual Fuel
- Other oil prods

- Crude oil
- NGL
- Other
- LPG
- Naphtha
- Gasoline
- Kerosene
- Diesel
- Residual Fuel
- Other oil prods

# Country: Bolivia

## Flow: Refinery

Refinery outputs/intakes comparison



Issue: sharp decrease of Refinery Intake while Refinery Outputs remain at the normal level.

Due to a maintenance?



# Country: Egypt

## Timeliness and completeness

### Timeliness

JAN-JUN 2014



JUL-Dec 2013



JAN-JUN 2013



JUL-DEC 2012



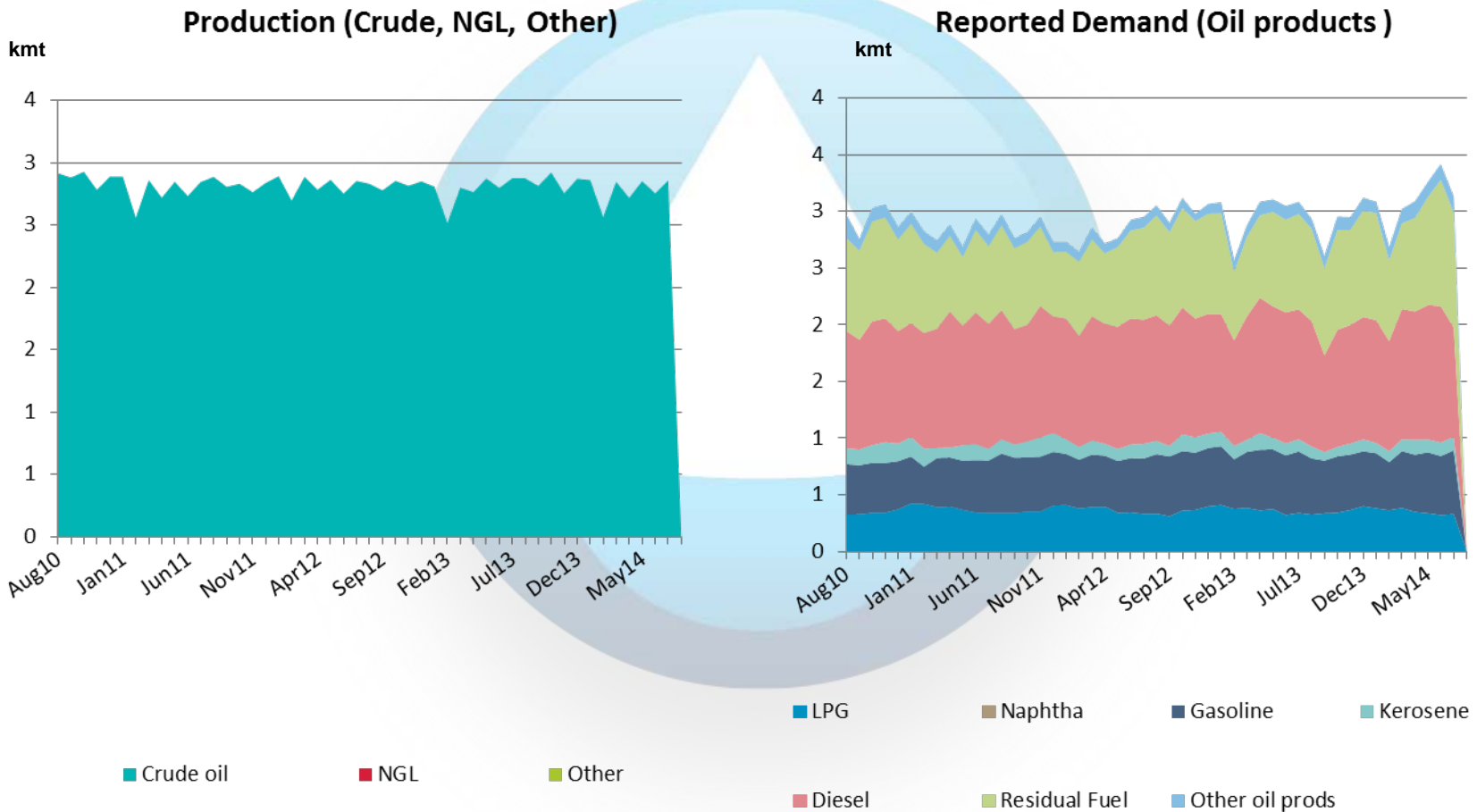
😊=Good, 😐=Fair, ☹=Poor

### Completeness

- Of the extended format (primary crude product table), no data reported on NGL and Other
- Of the extended format (oil products table), Naphtha and Jet kerosene data **are available**
- No stock data available.

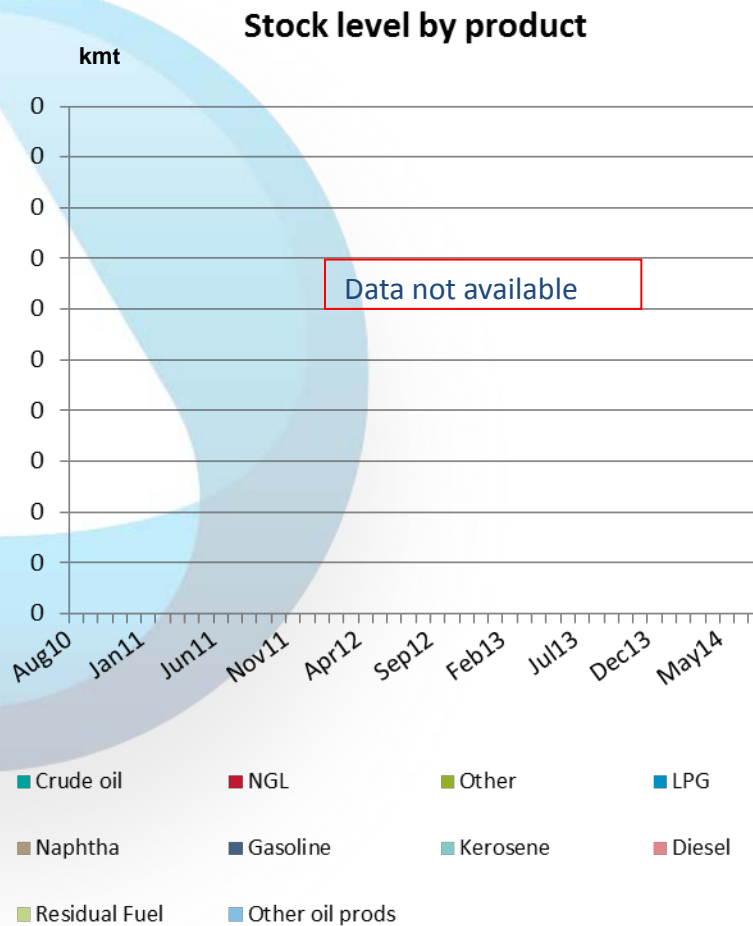
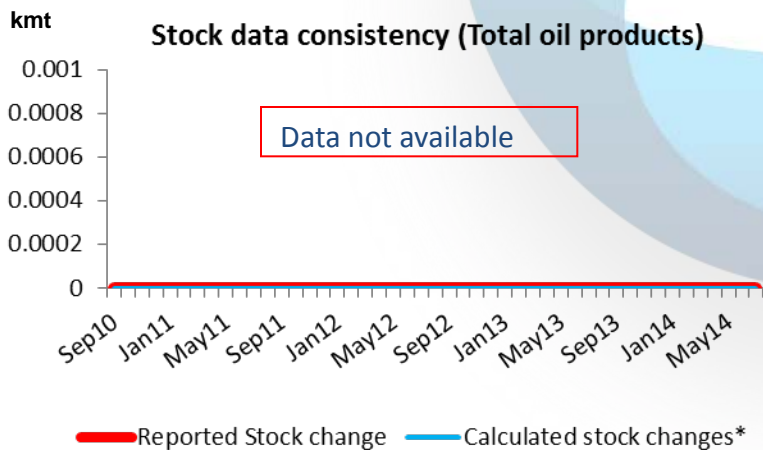
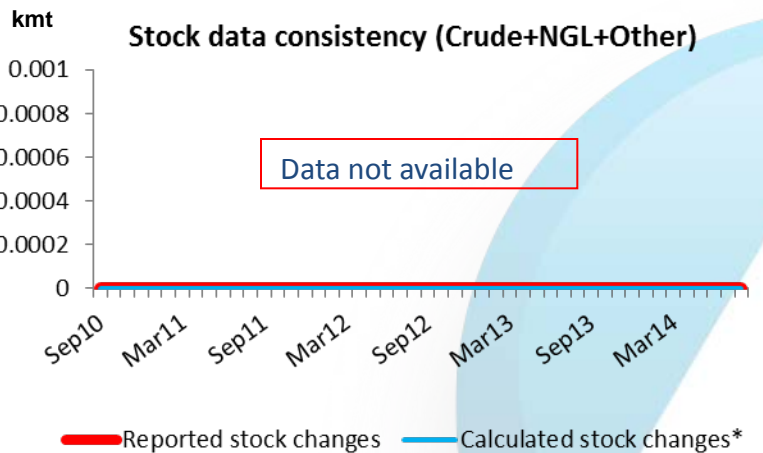
# Country: Egypt

## Flow: Production, Demand



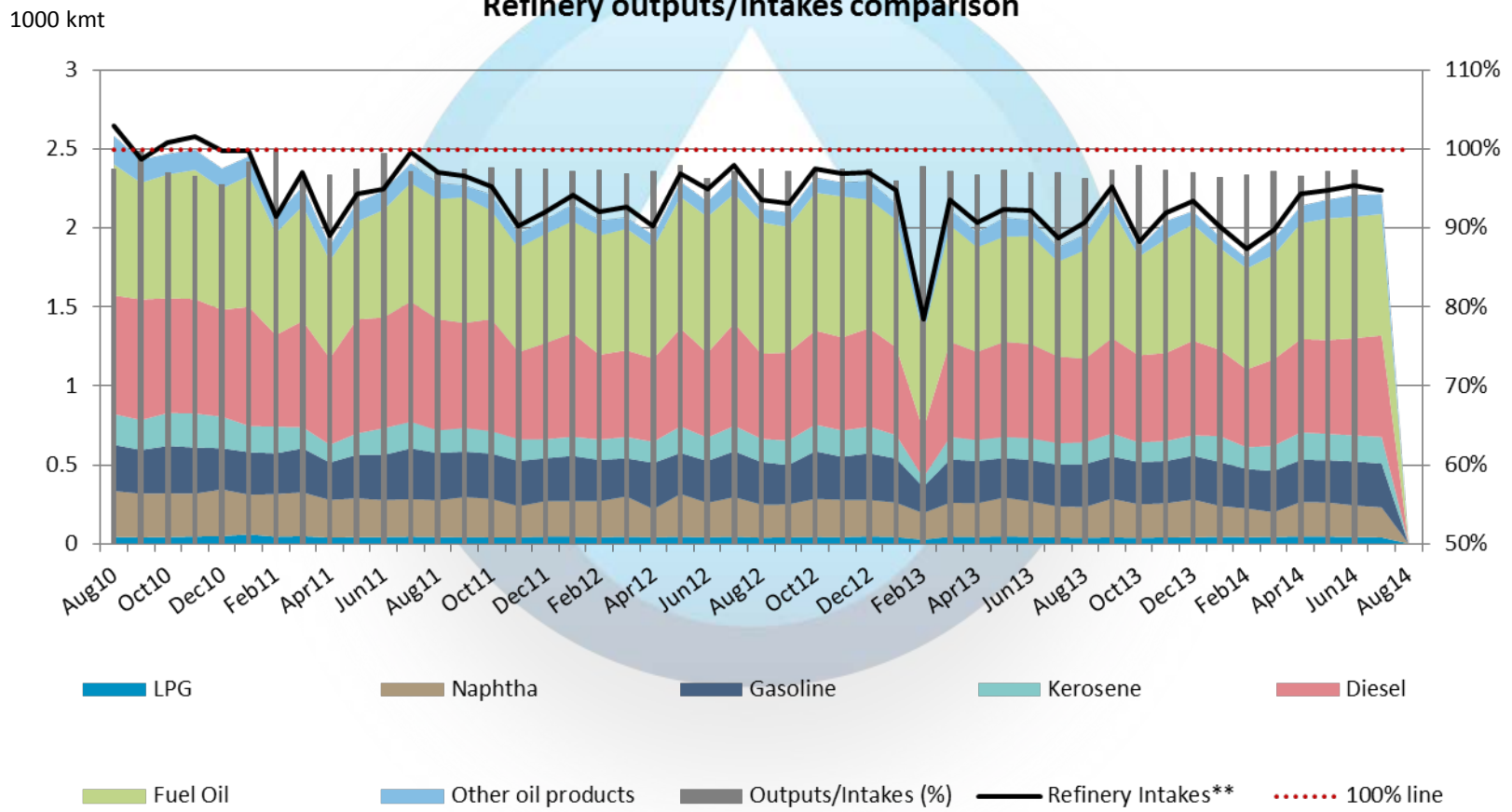
# Country: Egypt

## Flow: Stocks



# Egypt

## Refinery outputs/intakes comparison



# Country: Ghana

## Timeliness and completeness

Time	JAN-JUN 2014	JUL-Dec 2013	JAN-JUN 2013	JUL-DEC 2012
	N/A	N/A	N/A	N/A

😊=Good, 😐=Fair, ☹=Poor

**Few data available only prior to January 2002**

# Country: Iran

## Timeliness and completeness

### Timeliness

JAN-JUN 2014



JUL-Dec 2013



JAN-JUN 2013

N/A

JUL-DEC 2012



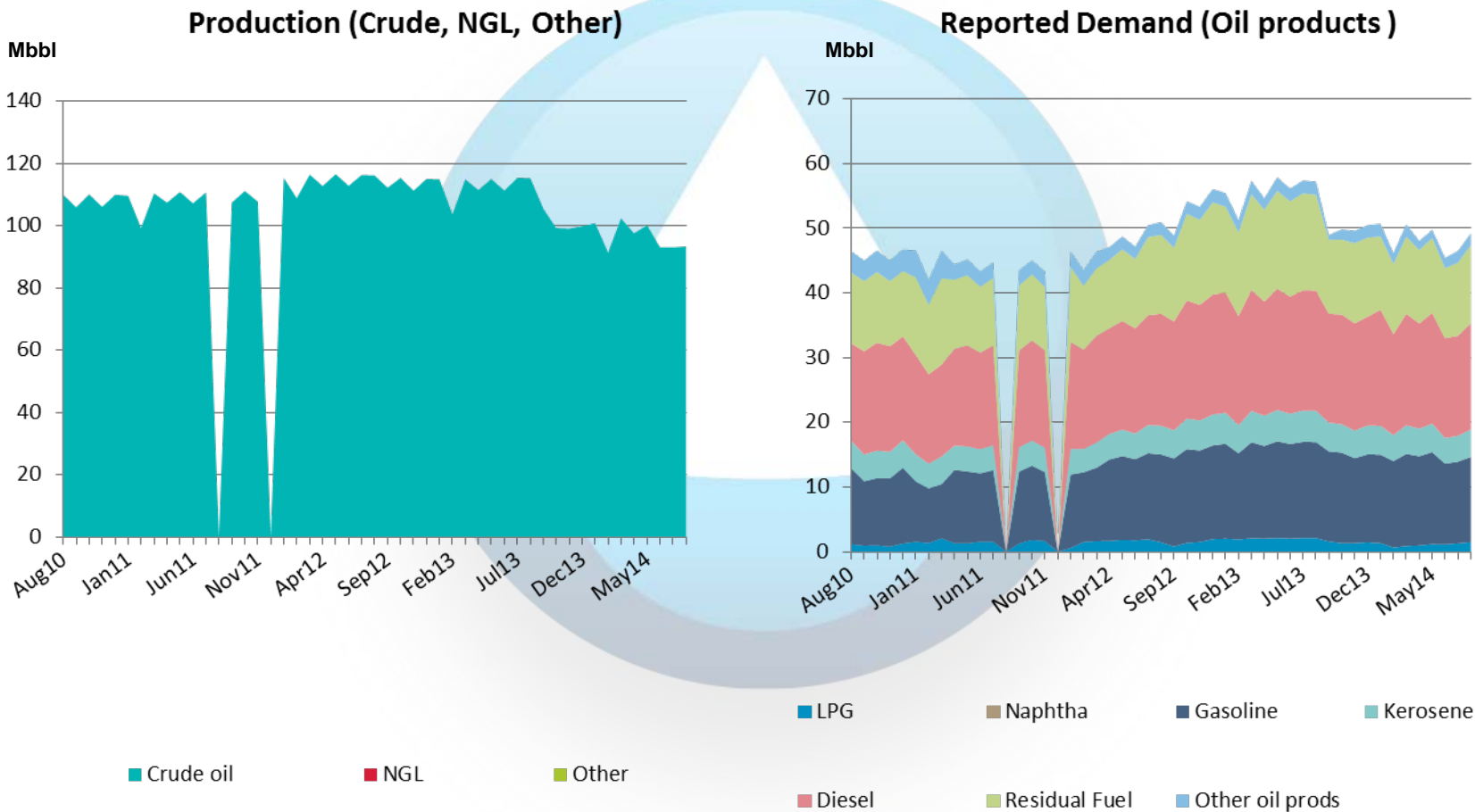
😊=Good, 😐=Fair, ☹=Poor

### Completeness

- No additional data points covered in the extended format is reported.
- Only Stock changes data of Crude oil are available.

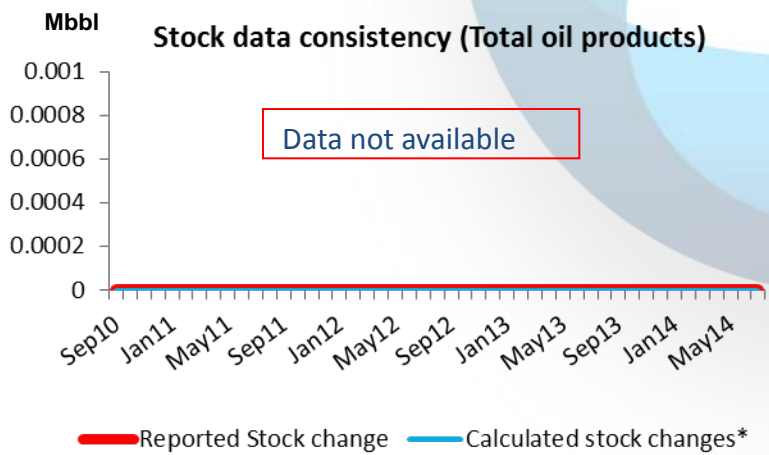
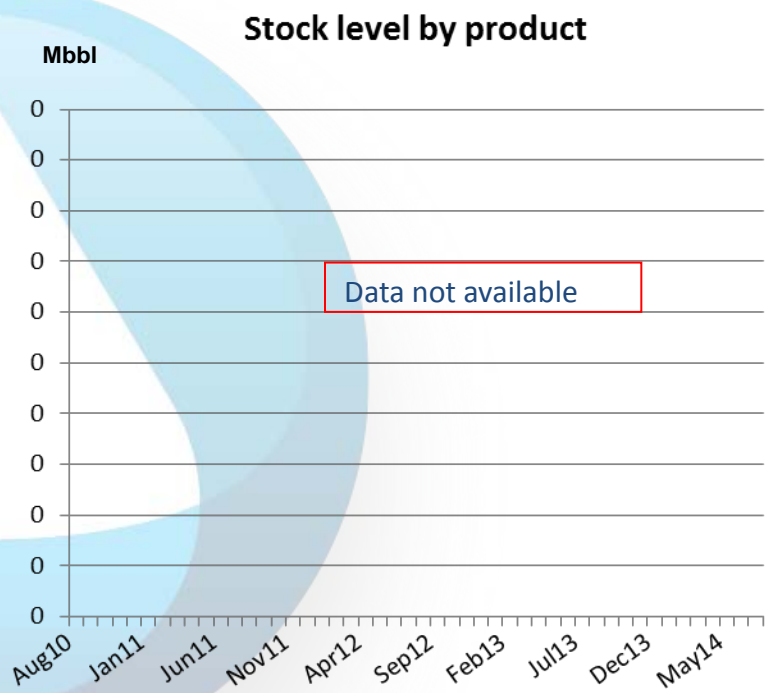
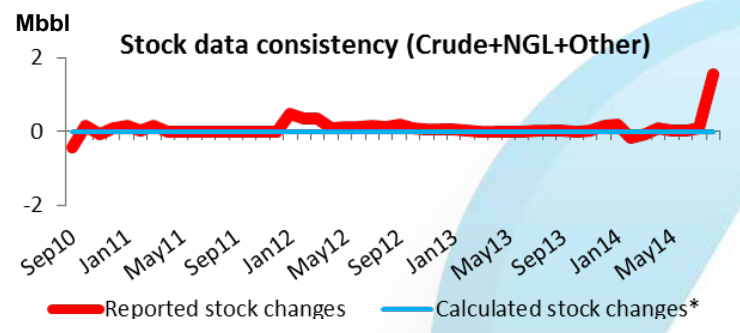
# Country: Iran

## Flow: Production, Demand



# Country: Iran

## Flow: Stocks



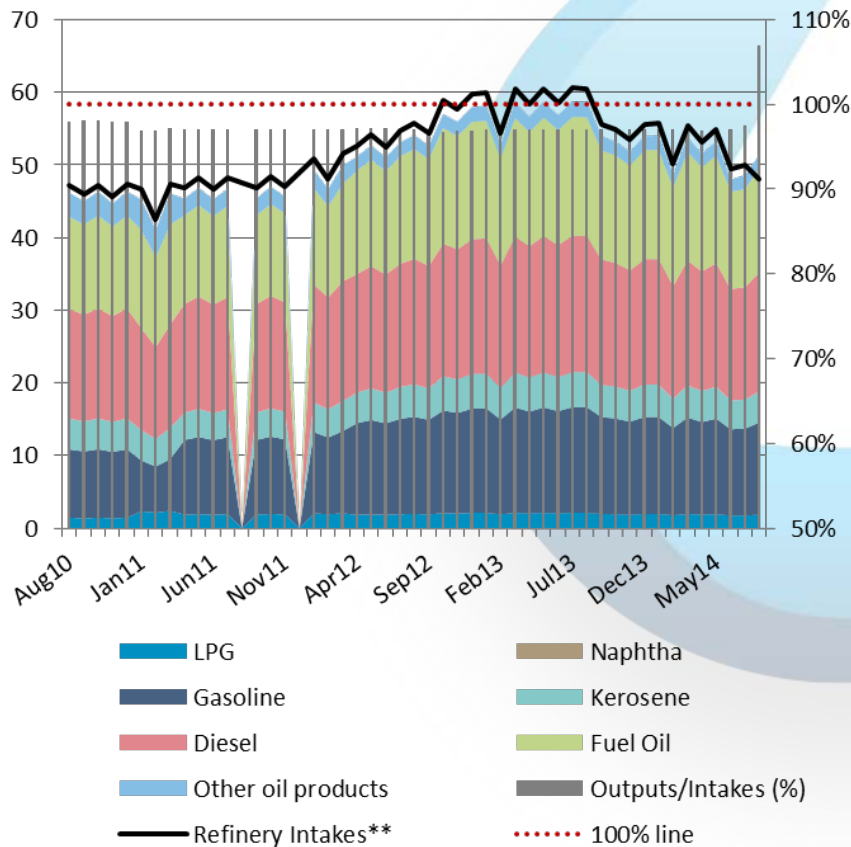
- Crude oil
- NGL
- Other
- LPG
- Naphtha
- Gasoline
- Kerosene
- Diesel
- Residual Fuel
- Other oil prods



# Country: Iran

## Flow: Refinery

Refinery outputs/intakes comparison



The latest month the refinery outputs is well above crude intake.

# Country: Iraq

## Timeliness and completeness

### Timeliness

JAN-JUN 2014



JUL-Dec 2013



JAN-JUN 2013



JUL-DEC 2012



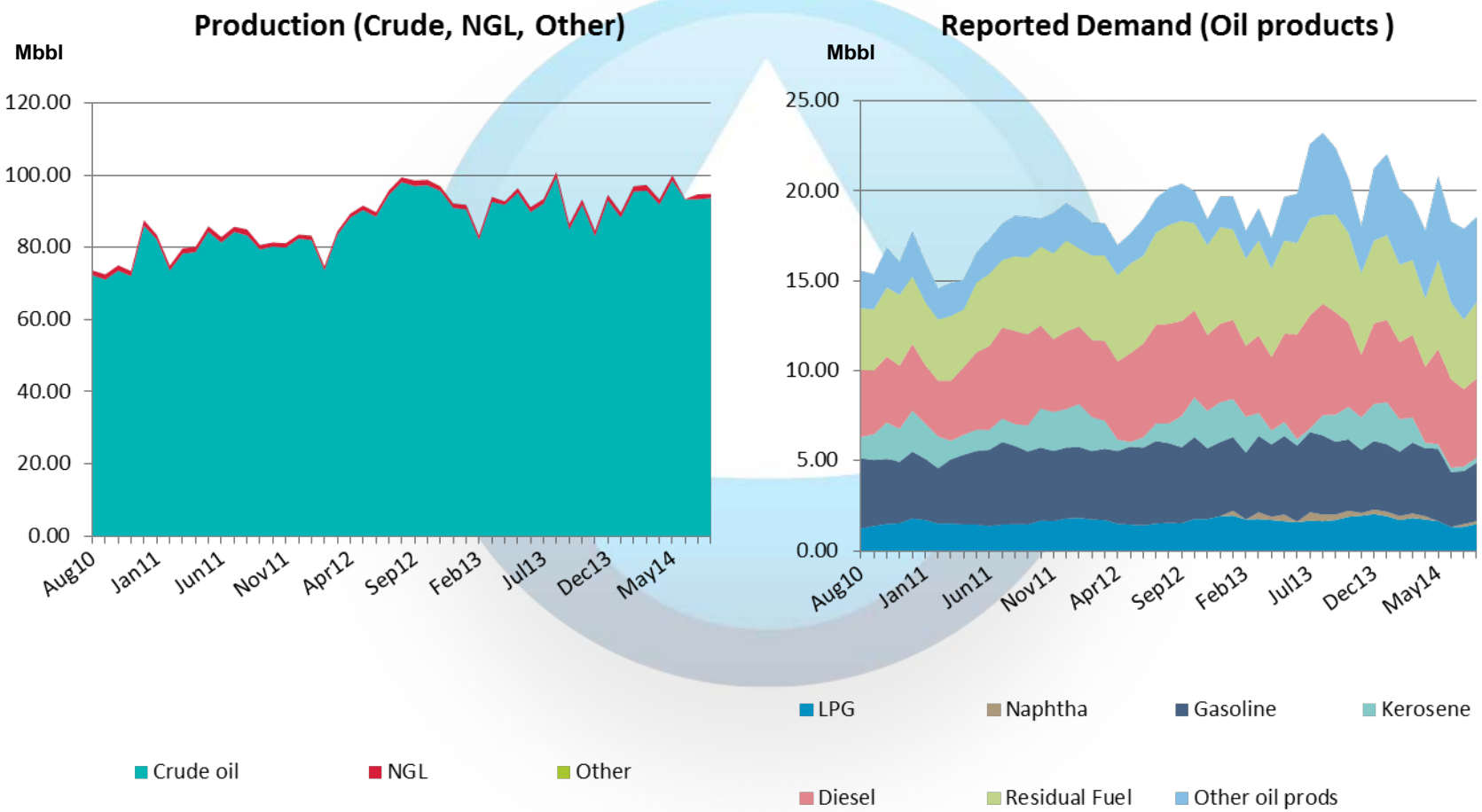
😊=Good, 😐=Fair, ☹=Poor

### Completeness

- Of the extended format (primary crude product table), only NGL production data are available.
- Of the extended format (oil product table), Naphtha data became available as of Jan. 2013. Jet Kerosene data became available as of Jan. 2012.

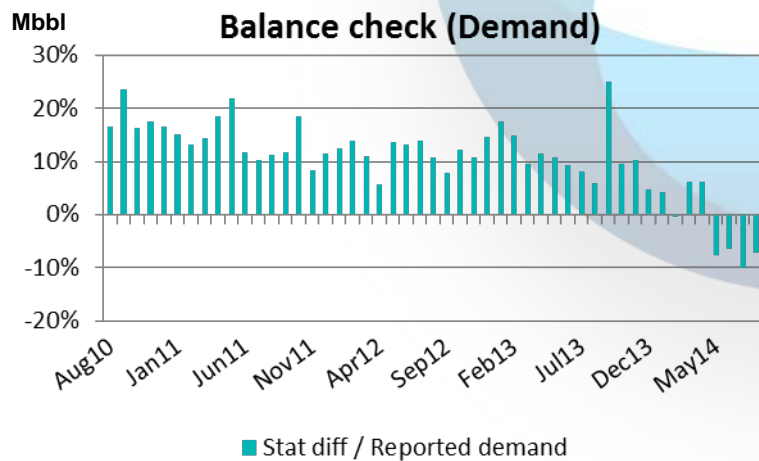
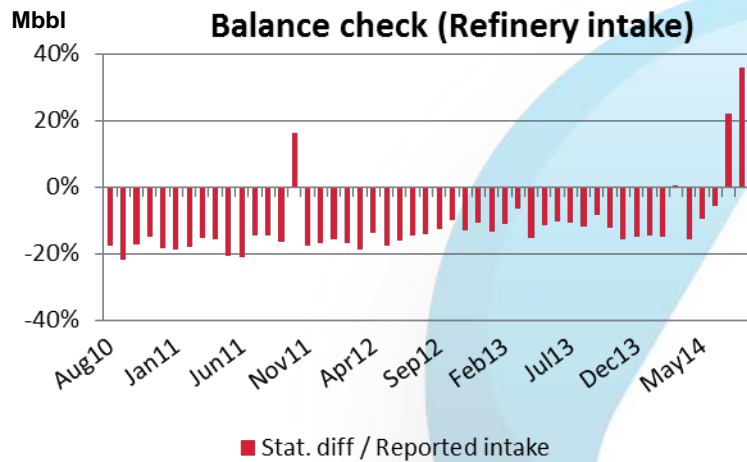
# Country: Iraq

## Flow: Production, Demand



# Country: Iraq

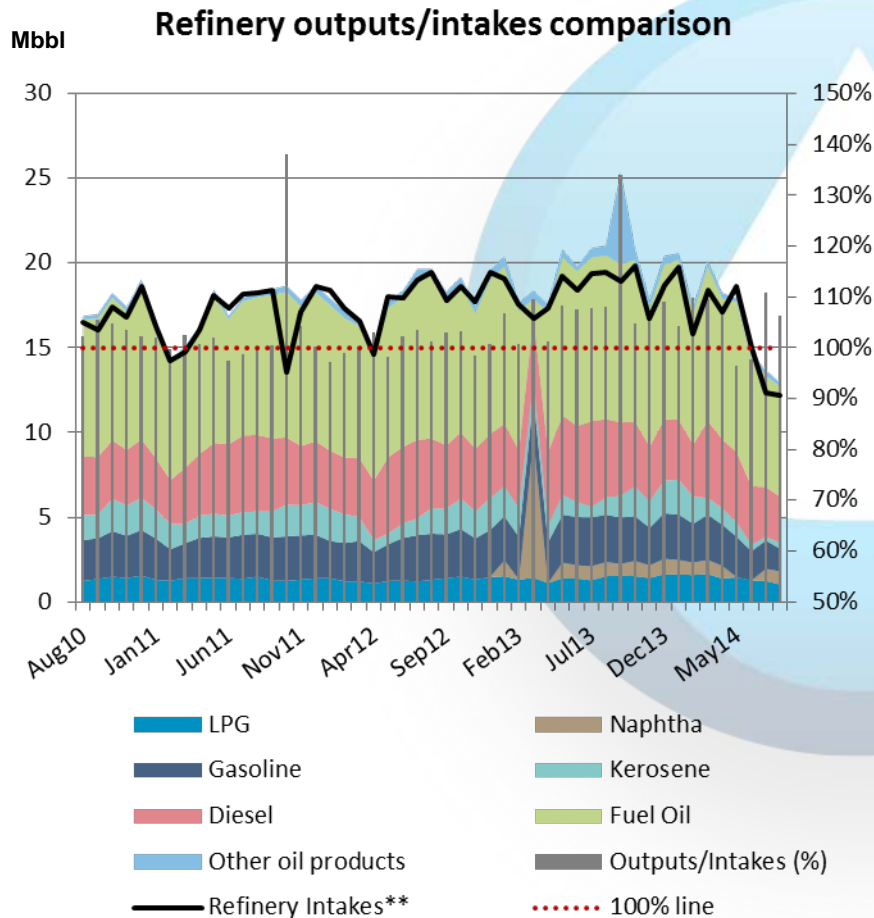
## Flow: Balances



Statistical differences constantly represents above 10% of supply/demand.

# Country: Iraq

## Flow: Refinery



Very high naphtha output in Mar. 2013

Refinery outputs way above intakes in Oct. 2011 and in Sep. 2013

# Country: Morocco

## Timeliness and completeness

### Timeliness

JAN-JUN 2014



JUL-Dec 2013



JAN-JUN 2013



JUL-DEC 2012



😊=Good, 😐=Fair, 😞=Poor

### Completeness

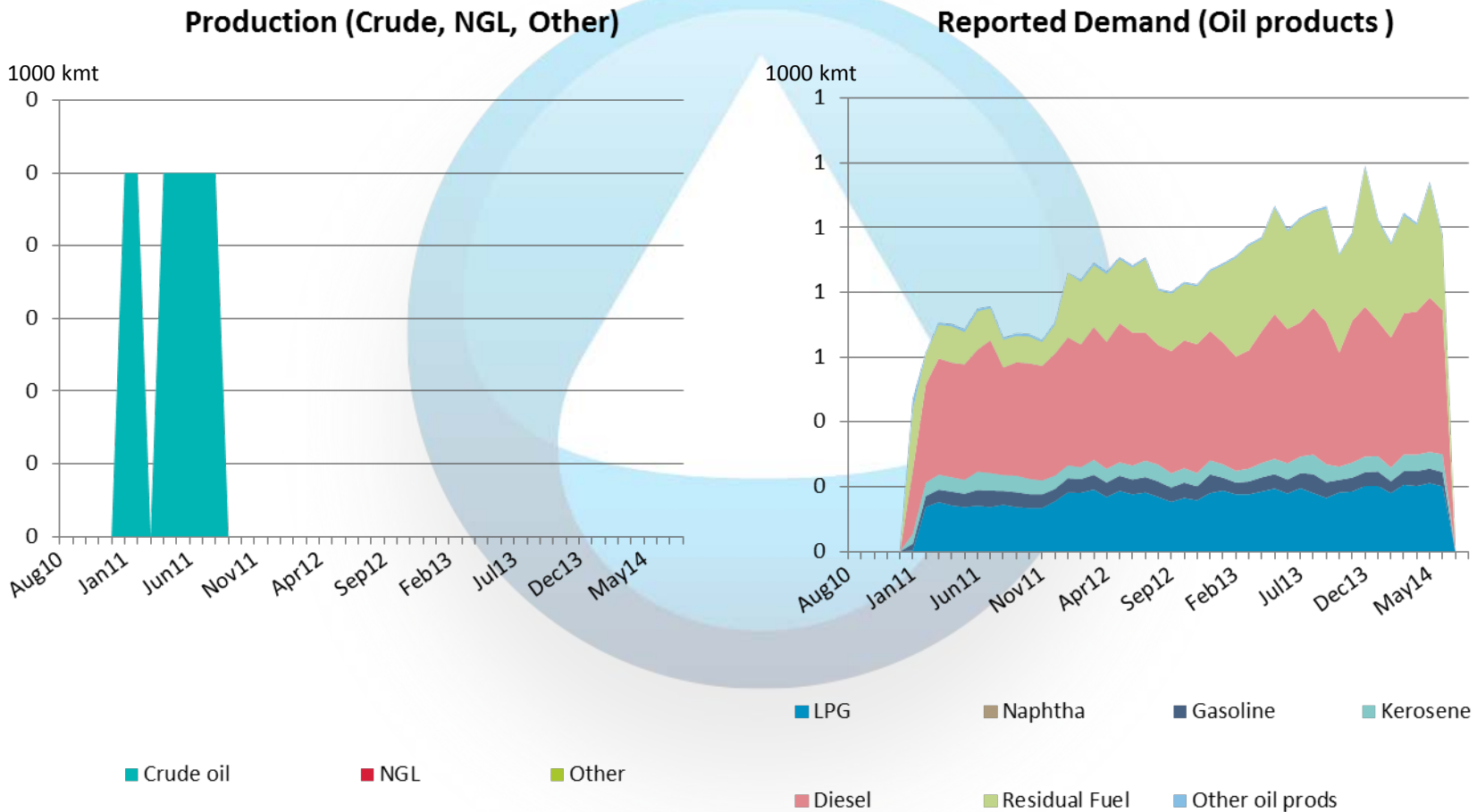
- Of the extended format (primary crude product table), some Other data are available
- Of the extended format (oil product table), some Naphtha and Jet kerosene data are available
- Concerning stock data, only crude oil stock change data and occasional oil products' data are available.

### Reliability

- Apparent inconsistency in Refinery intakes/outputs comparison at the beginning

# Country: Morocco

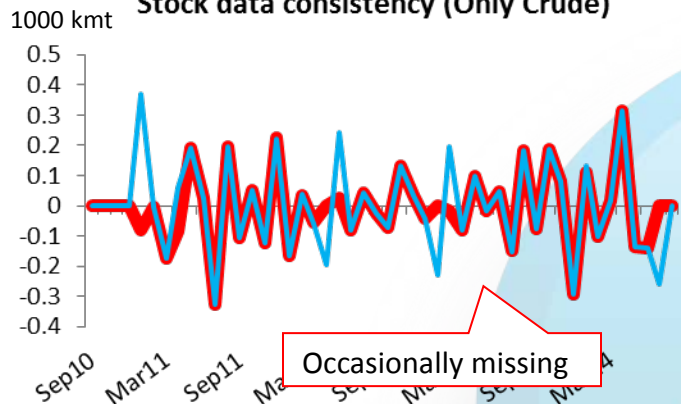
## Flow: Production, Demand



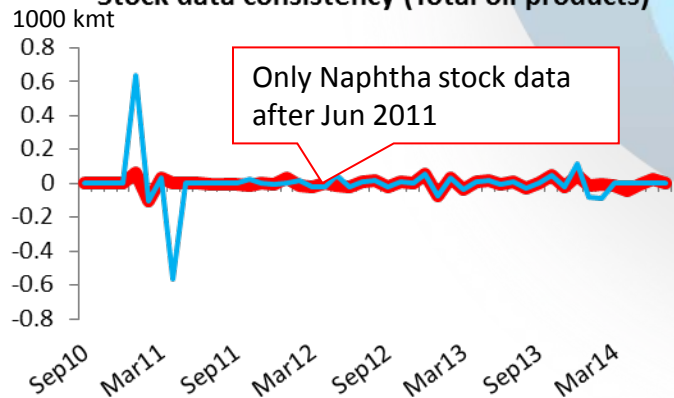
# Country: Morocco

## Flow: Stocks

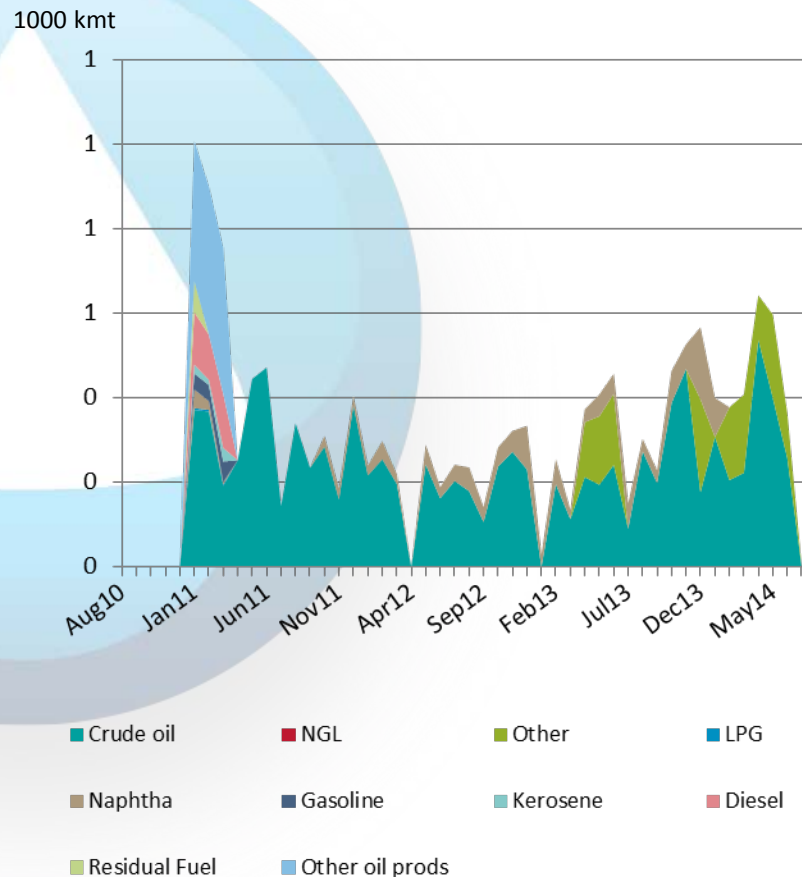
Stock data consistency (Only Crude)



Stock data consistency (Total oil products)



Stock level by product

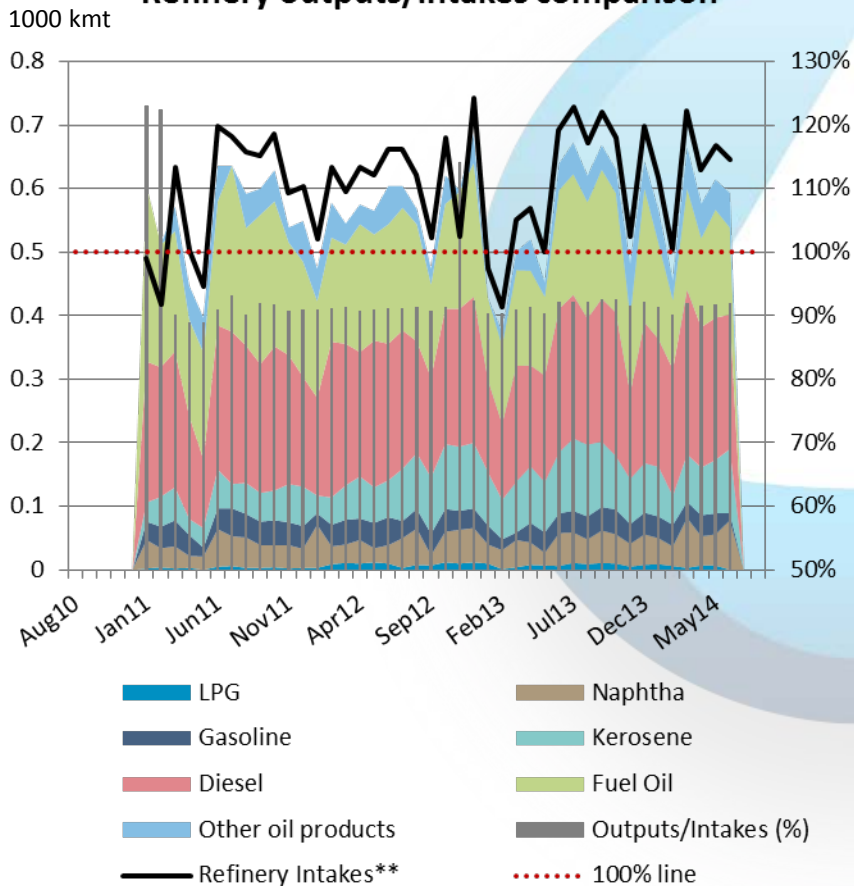




# Country: Morocco

## Flow: Refinery

Refinery outputs/intakes comparison



Oil products outputs are around 90% of refinery intakes except first two month(due to no Other figure available).

Way above 100% refinery yield in Nov 2012.

# Country: Qatar

## Timeliness and completeness

### Timeliness

JAN-JUN 2014



JUL-Dec 2013



JAN-JUN 2013



JUL-DEC 2012



😊=Good, 😐=Fair, ☹=Poor

### Completeness

- Of the extended format (primary crude product table), there is no additional data point available.
- Of the extended format (oil product table), Naphtha data are available.

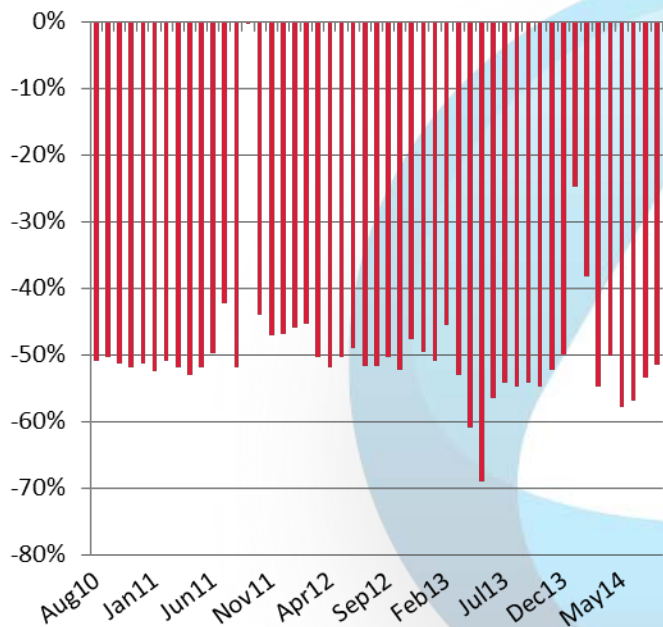
### Reliability

- There are inconsistency between calculated and reported Crude+NGL+Other stock changes data.
- Reporting issue of LNG due to production of LPG which is solely reported under Refinery outputs.

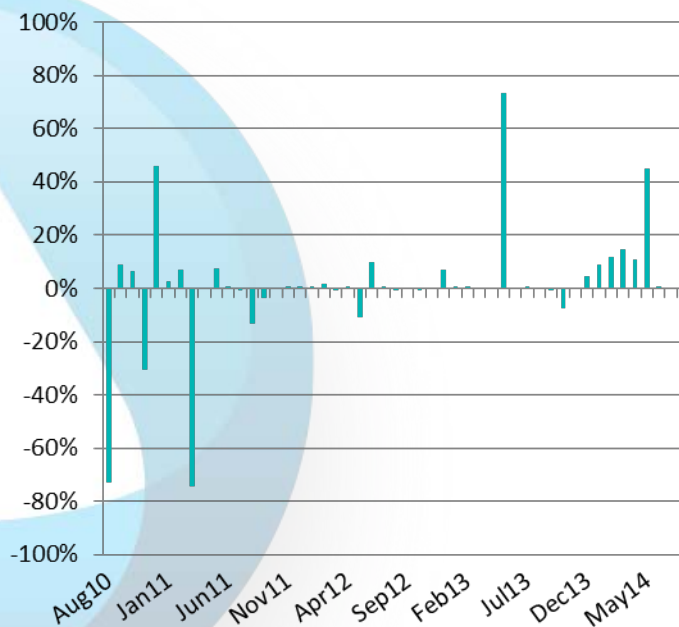
# Country: Qatar

## Balances

### Balance check (Refinery intake)



### Balance check (Demand)

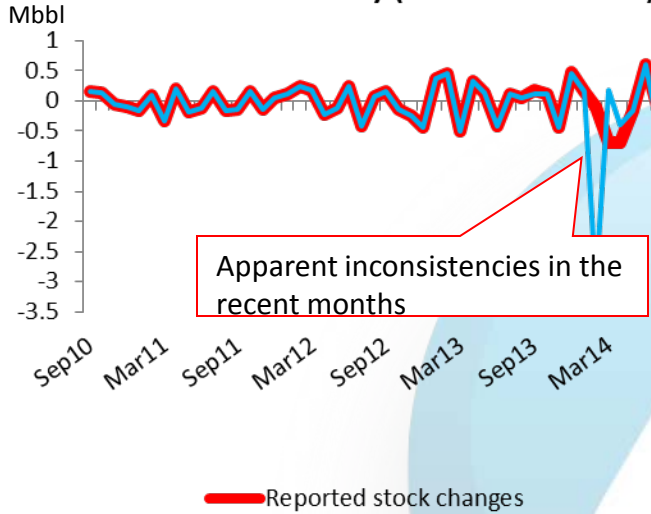


■ Stat. diff / Reported intake

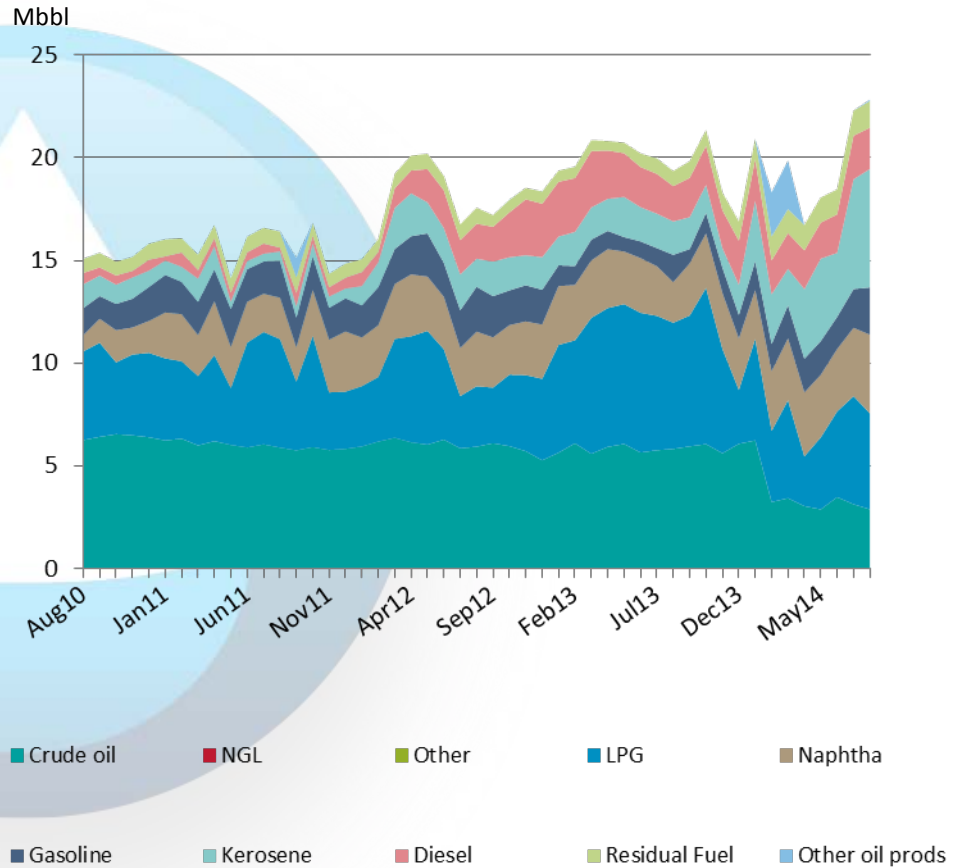
■ Stat diff / Reported demand

# Qatar

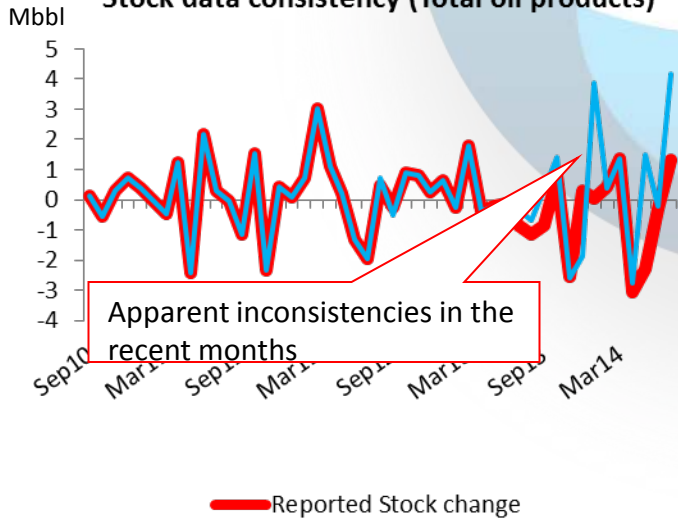
Stock data consistency (Crude+NGL+Other)



Stock level by product

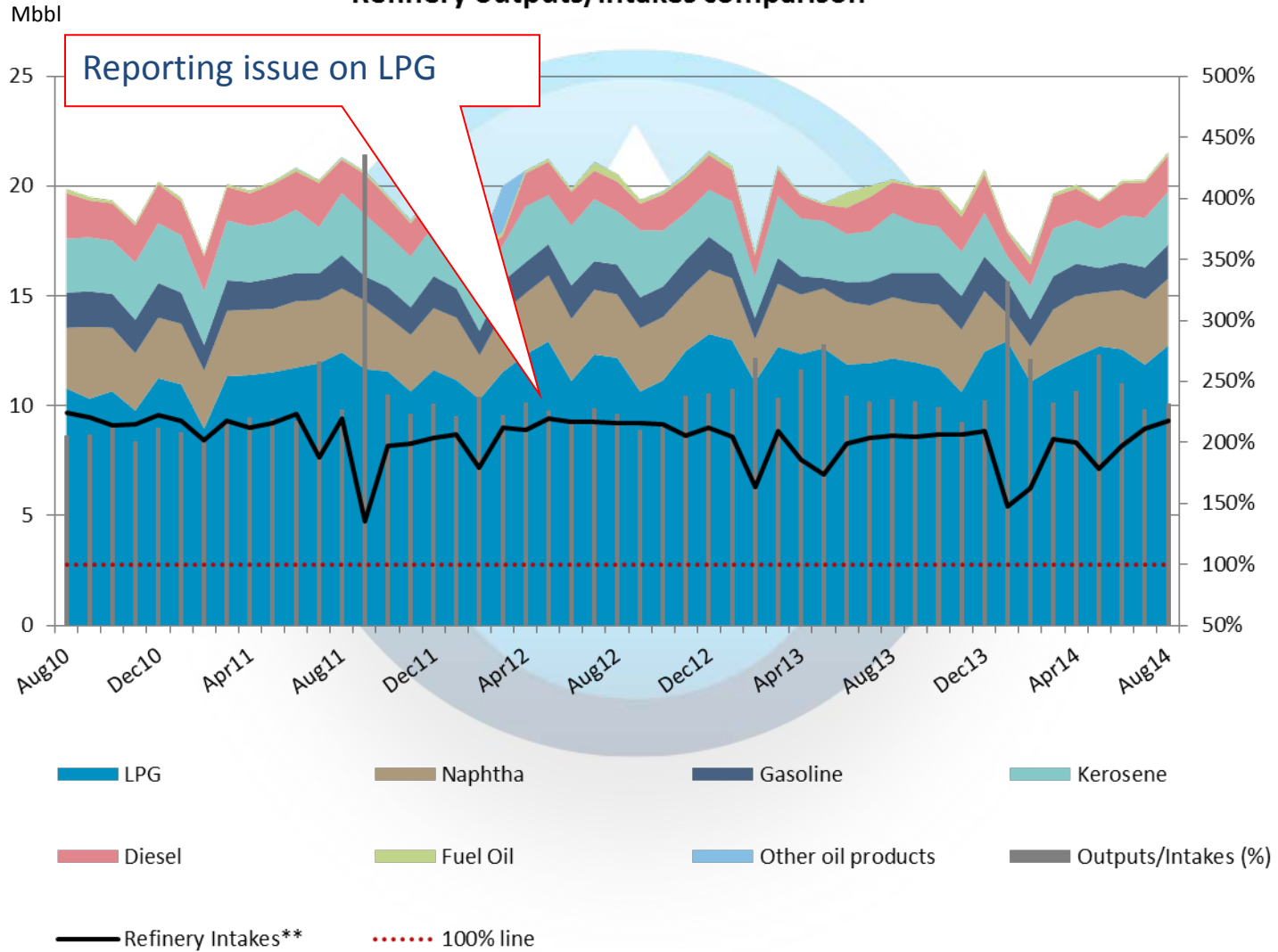


Stock data consistency (Total oil products)



# Qatar

Refinery outputs/intakes comparison



# Country: Russia

## Timeliness and completeness

### Timeliness

JAN-JUN 2014



JUL-Dec 2013



JAN-JUN 2013



JUL-DEC 2012



😊=Good, 😐=Fair, ☹=Poor

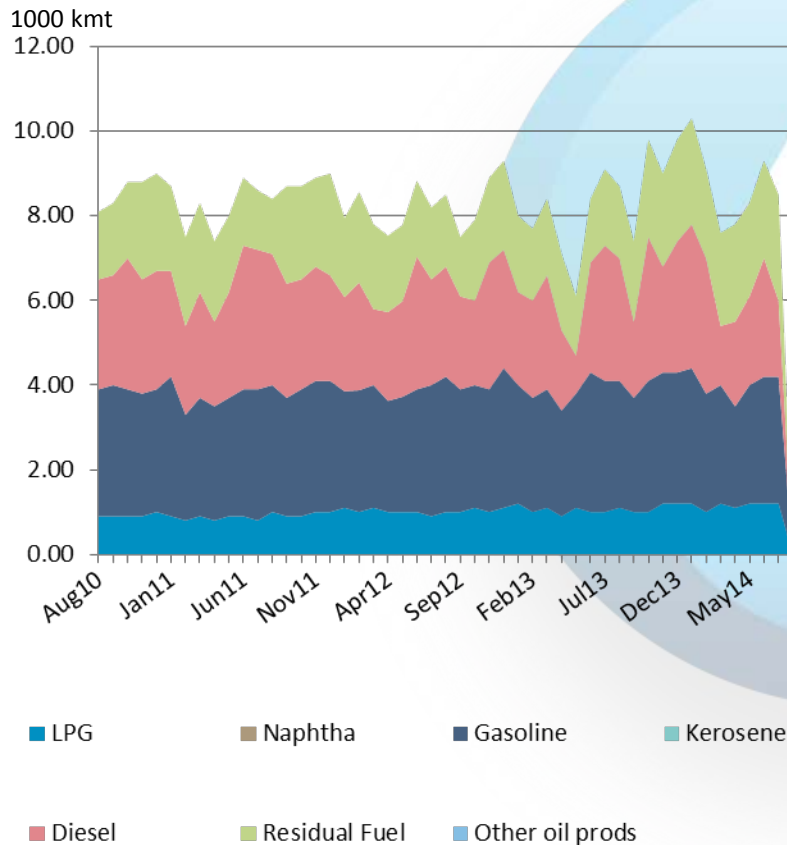
### Completeness

- Of the JODI-Oil extended format (primary crude product table), some NGL data available as of January 2012.
- Of the JODI-Oil extended format (oil product table), only Jet Kerosene export data are available.

# Country: Russia

## Completeness

Reported Demand (Oil products)

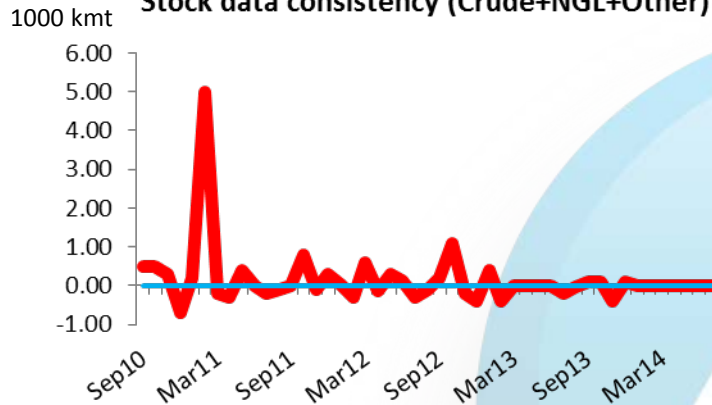


- LPG sporadically unavailable
- Of the JODI-Oil extended format (oil product table), only Jet Kerosene export data are available.
- Kerosene and Total products data are not available except trade numbers

# Country: Russia

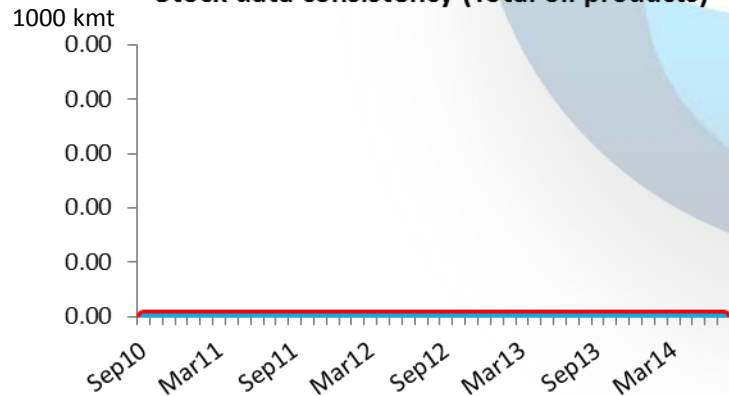
## Completeness

Stock data consistency (Crude+NGL+Other)



- Closing stock levels of Crude oil are mainly not available.
- Kerosene and Total products data are not available except trade numbers.

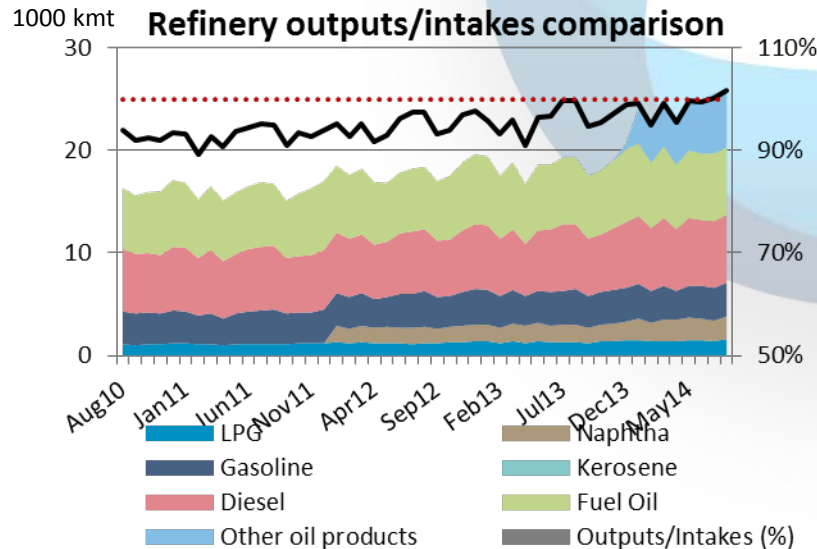
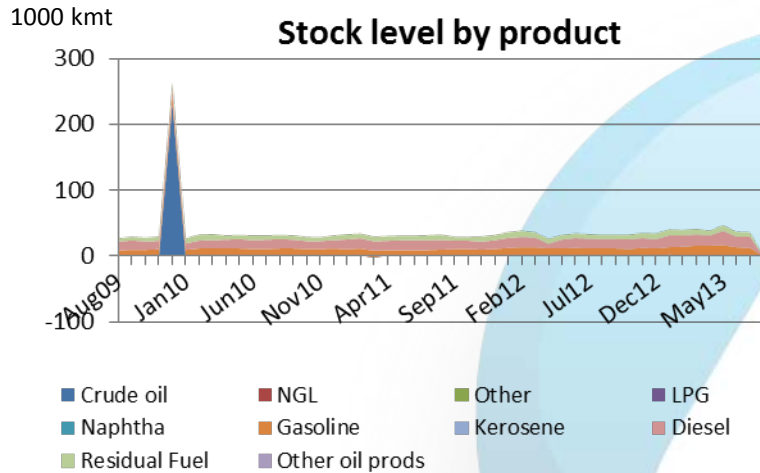
Stock data consistency (Total oil products)



Reported Stock change



# Country: Russia Completeness



- Closing stock levels of Crude oil are mainly not available.
- Kerosene and Total products data are not available except trade numbers.
- Newly refinery outputs of Other oil products are available

# Country: Saudi Arabia

## Timeliness and completeness

### Timeliness

JAN-JUN 2014



JUL-Dec 2013



JAN-JUN 2013



JUL-DEC 2012



😊=Good, 😐=Fair, ☹=Poor

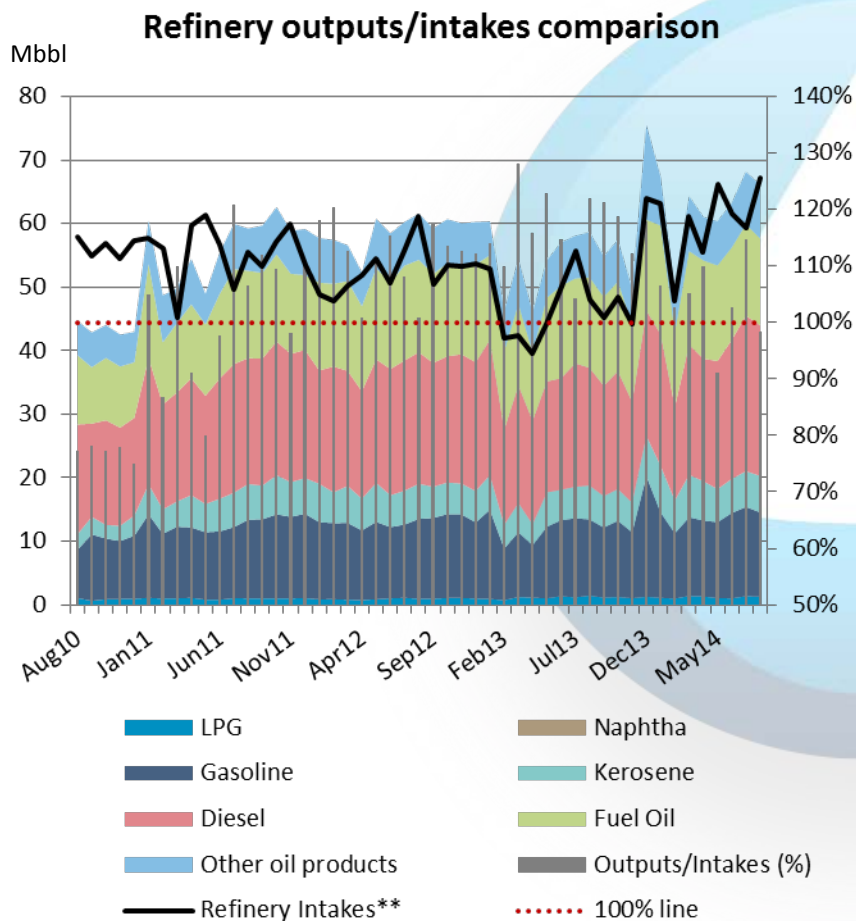
Regular data submission on M-1 basis

### Completeness

- No LPG trade data?
- Of the extended format (primary crude product table), no data reported on NGL and Other.
- Of the extended format (oil product table), only Export data of Naphtha is available.

# Country: Saudi Arabia

## Flow: Refinery



Inconsistency between refinery intakes out puts.

Apparent change in the level of Oil products

Refinery outputs as of Jan 2011. Metadata and/or revision of the historical data would be helpful in the event there have been changes to the reporting methodology.

# Country: South Africa

## Timeliness and completeness

### Timeliness

JAN-JUN 2014



JUL-Dec 2013



JAN-JUN 2013



JUL-DEC 2012



😊=Good, 😊=Fair, 😞=Poor

Regular data submission on M-1 basis

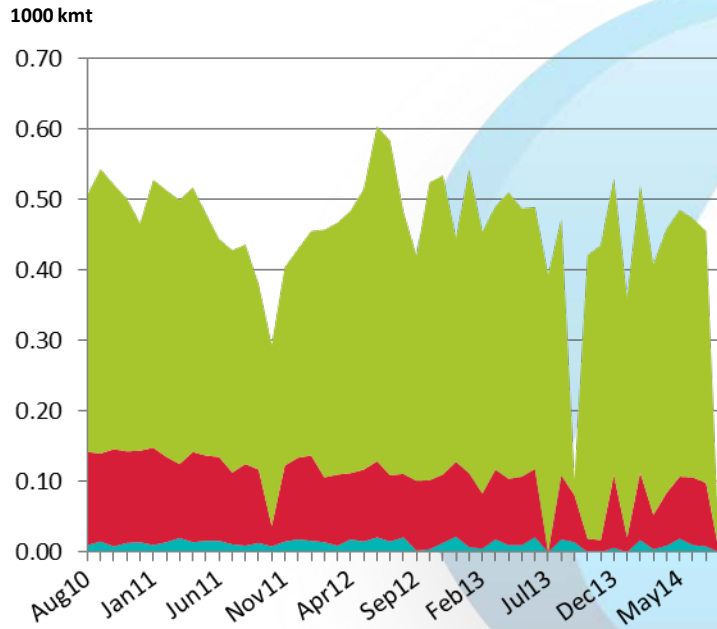
### Completeness

- Of the extended format (primary crude product table), NGL and Other (Primary) are available.
- Of the extended format (oil product table), Naphtha and Jet Kerosene data are available.

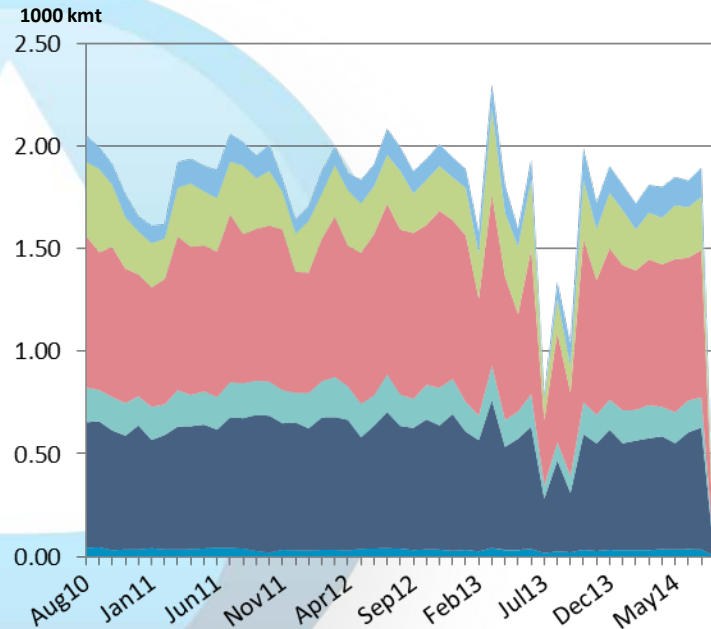
# Country: South Africa

## Flow: Production, Demand

Production (Crude, NGL, Other)



Reported Demand (Oil products)

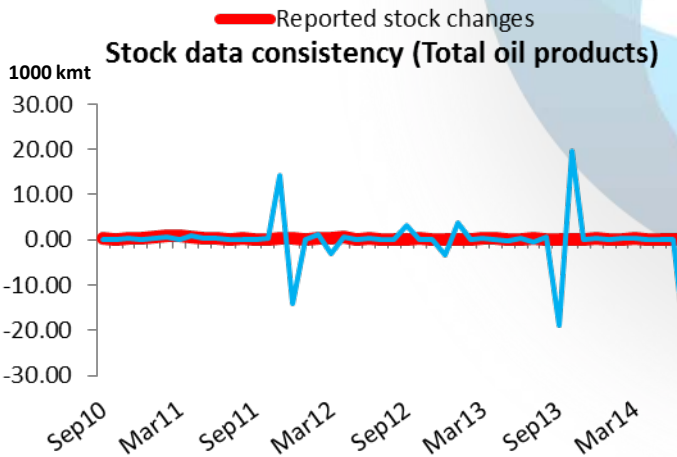
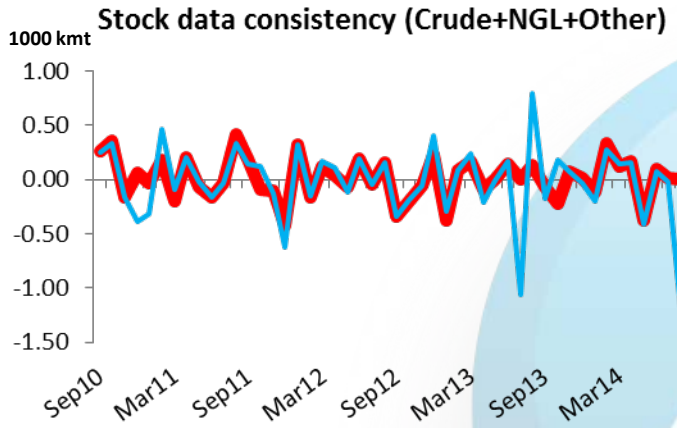


Crude oil NGL Other

LPG Gasoline  
Kerosene Diesel Residual Fuel  
Other oil prods Naphtha

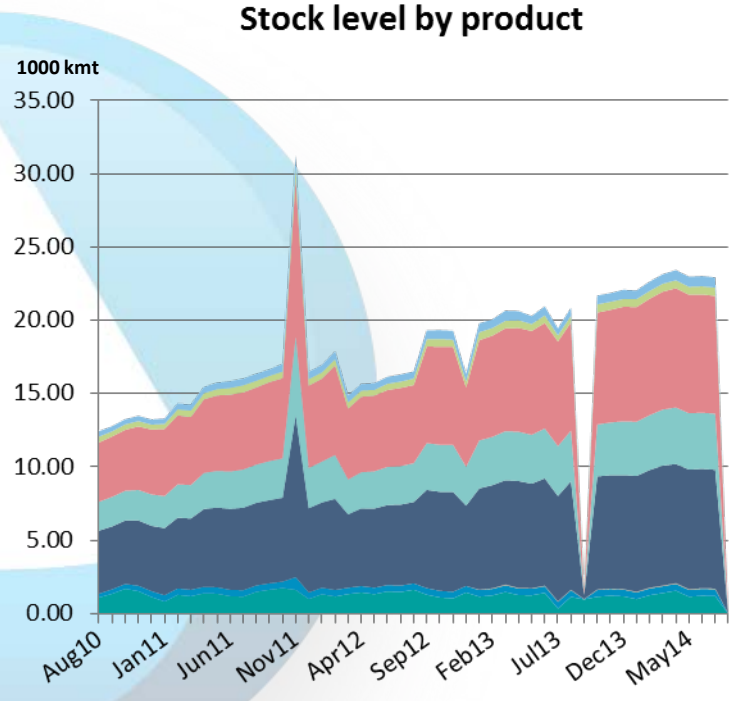
# Country: South Africa

## Flow: Stocks



— Reported stock changes

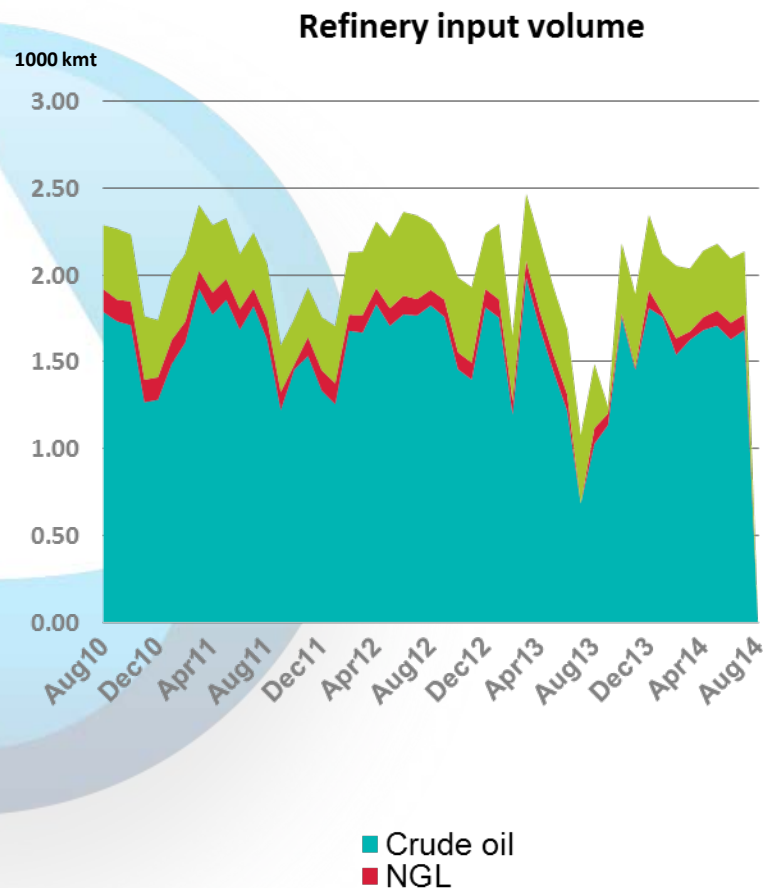
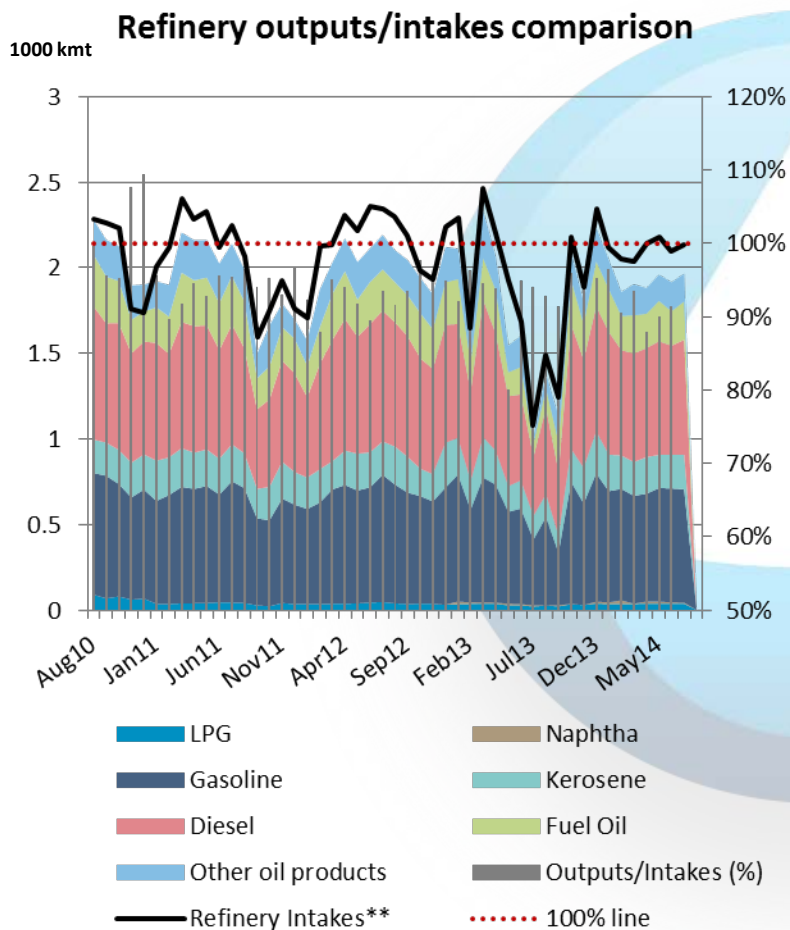
— Reported Stock change



- Crude oil
- NGL
- Other
- LPG
- Naptha
- Gasoline
- Kerosene
- Diesel
- Residual Fuel
- Other oil prods

# Country: South Africa

## Flow: Refinery



# Country: Tunisia

## Timeliness and completeness

### Timeliness

JAN-JUN 2014



JUL-Dec 2013



JAN-JUN 2013



JUL-DEC 2012



😊=Good, 😐=Fair, ☹=Poor

### Completeness

- Of the extended format (primary crude product table), some NGL data are available
- Of the extended format (oil product table), some Naphtha and Jet kerosene data are available

### Reliability

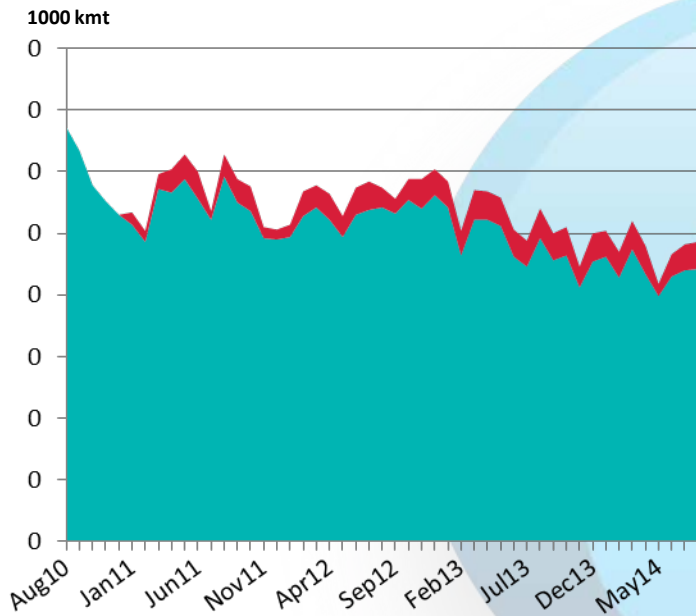
- Apparent inconsistency in comparison between reported and calculated stock changes.



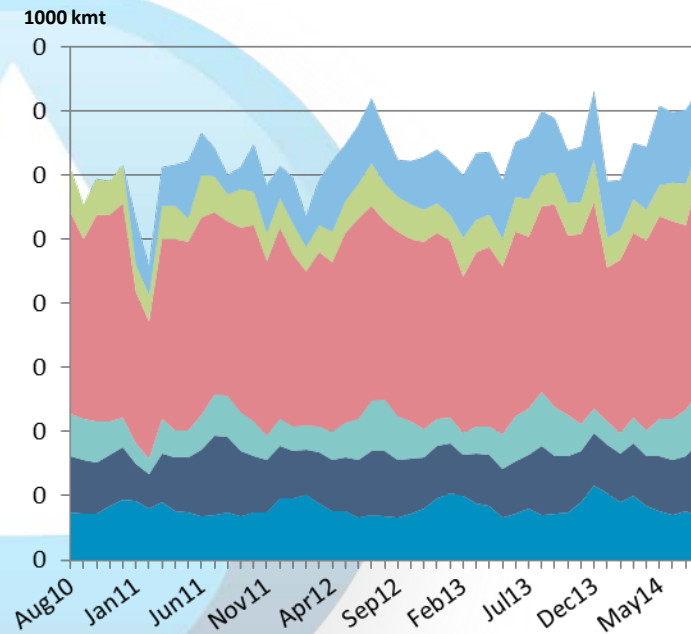
# Country: Tunisia

## Flow: Production, Demand

Production (Crude, NGL, Other)



Reported Demand (Oil products)



Crude oil NGL Other

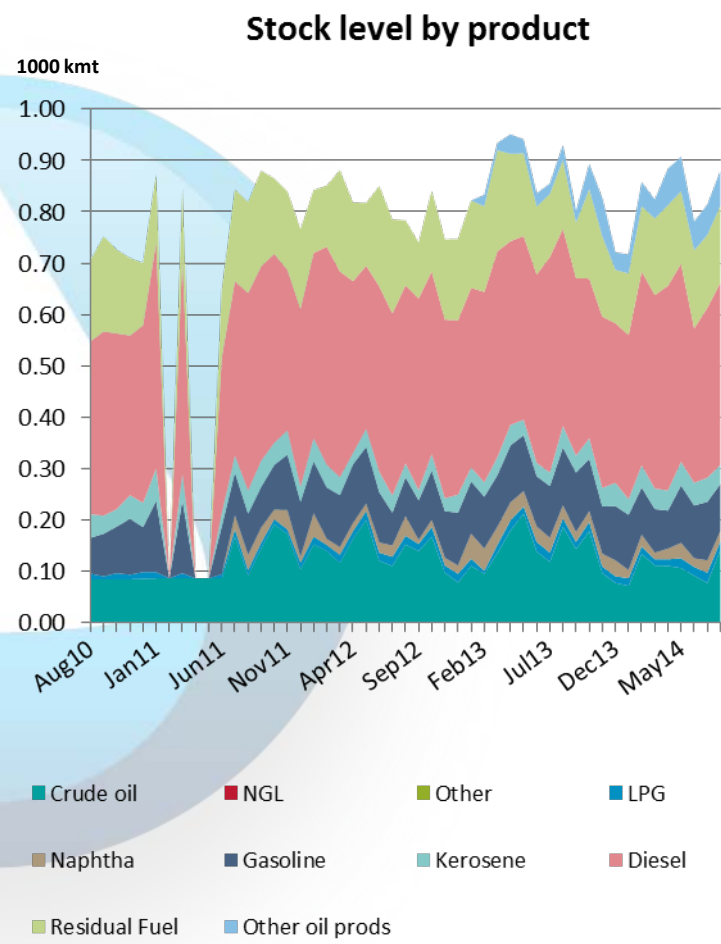
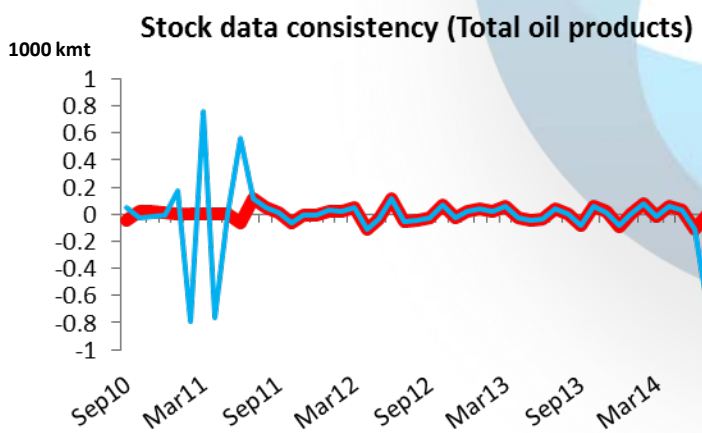
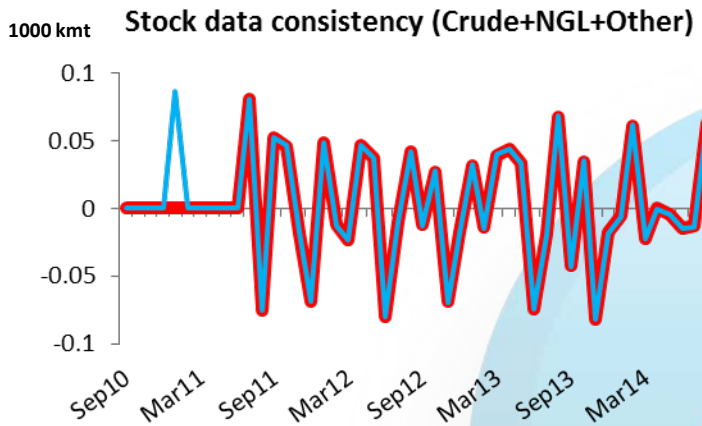
LPG Naphtha Gasoline  
Kerosene Diesel Residual Fuel  
Other oil prods

# Country: Tunisia

## Flow: Stocks

A Concrete Outcome of the Consumer - Producer Dialogue

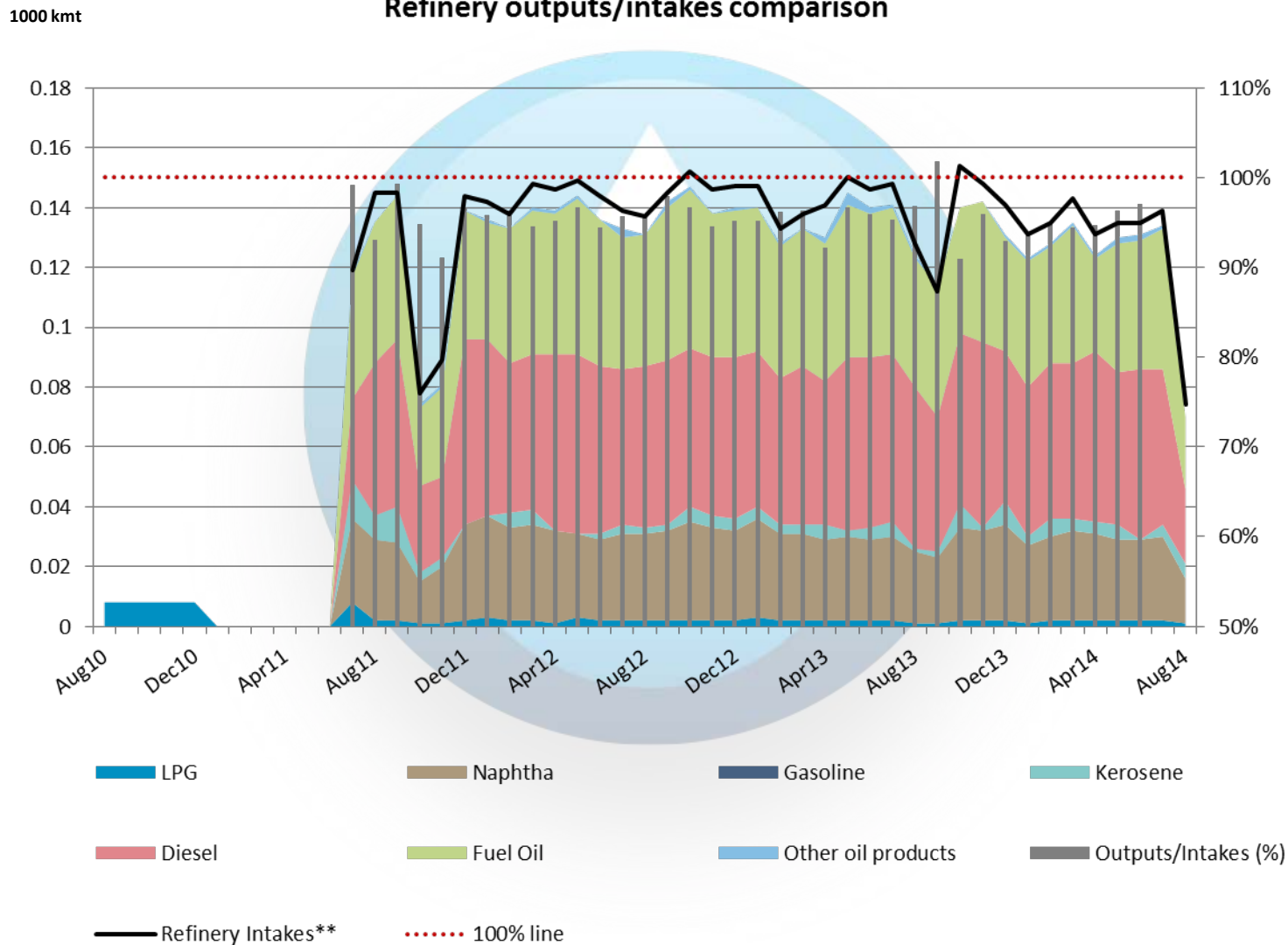
JOINT ORGANISATIONS DATA INITIATIVE



# Country: Tunisia

## Flow: Refinery

Refinery outputs/intakes comparison



# Country: UAE

## Timeliness and completeness

### Timeliness

JAN-JUN 2014



JUL-Dec 2013



JAN-JUN 2013



JUL-DEC 2012



While data submissions from Myanmar suspended since Dec 09, the country just resumed their data reporting with data from Sep12 to Apr 13.

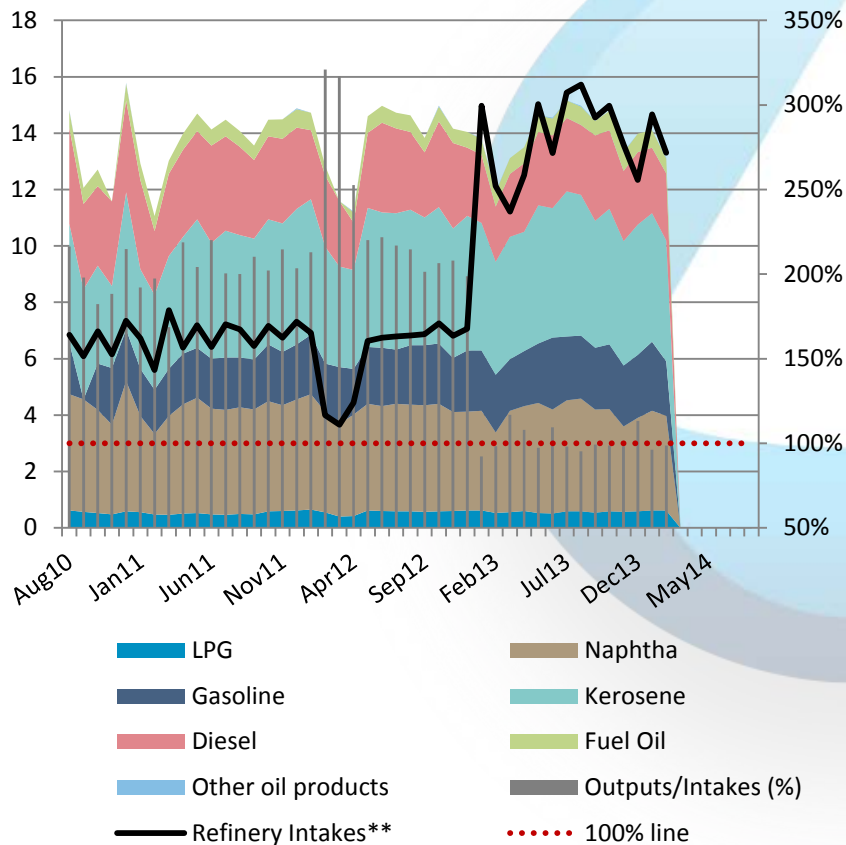
### Completeness

- Of the extended format (primary crude product table), there NGL production and trade data are available.
- Of the extended format (oil product table), Naphtha refinery output and trade data are available.
- Only crude oil/Total (Primary) stock changes and level data are available.
- As it is noted in the country note, UAE data covers only Abu Dhabi. Considering the country's rapid economic growth, data from other Emirates are becoming increasingly important.

# Country: UAE

## Refinery

Refinery outputs/intakes comparison

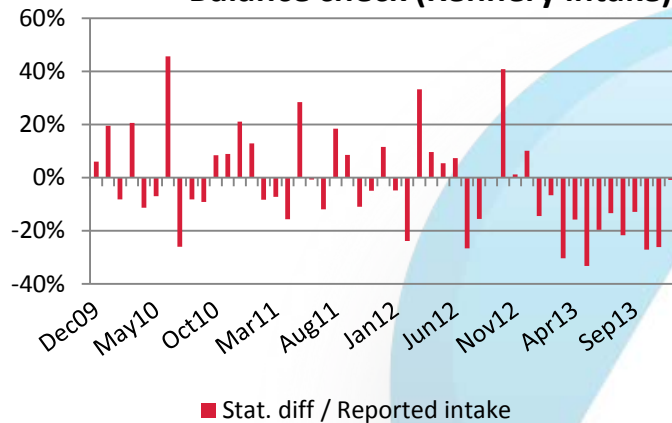


- According to the country note, condensate is included as of January 2013 and the volume seems added to the refinery data accordingly (can we revised prior period?).

# Country: UAE

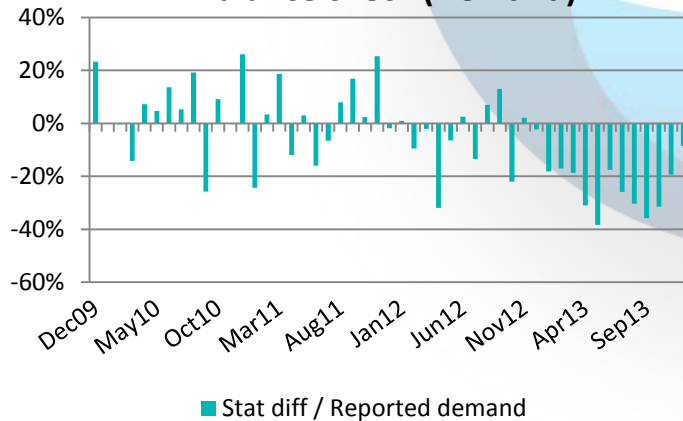
## Balance

**Balance check (Refinery intake)**



- Closing stock levels of Crude oil are mainly not available.
- Kerosene and Total products data are not available except trade numbers.

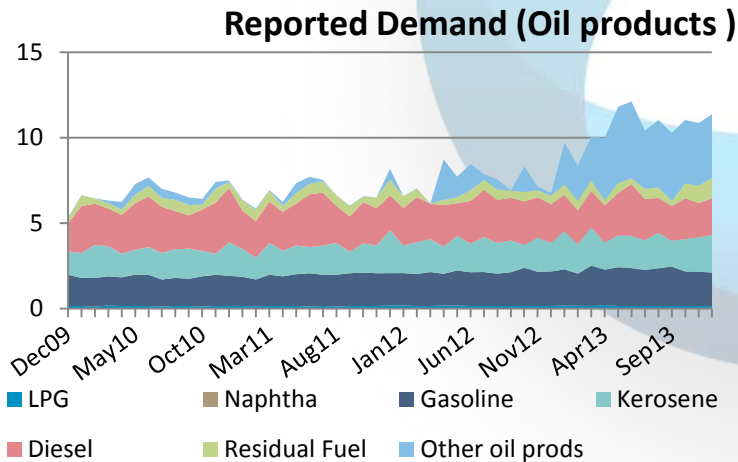
**Balance check (Demand)**



# Country: UAE

## Balance

Other (Primary)	Jan13	Feb13	Mar13	Apr13	May13	Jun13	Jul13	Aug13	Sep13	Oct13	Nov13	Dec13
Production	0	0	31	0	0	30	0	31	0	31	0	0
From other sources	0	0	0	0	0	0	0	0	0	0	0	0
Imports	0	0	0	0	0	0	0	0	0	0	0	0
Exports	31	28	0	0	0	0	0	0	0	0	0	0
Products transferred/Backflows	0	0	0	0	0	0	0	0	0	0	0	0
<b>Direct use</b>	<b>1333</b>	<b>1484</b>	<b>2480</b>	<b>3150</b>	<b>3379</b>	<b>3270</b>	<b>3193</b>	<b>3410</b>	<b>3180</b>	<b>3317</b>	<b>3240</b>	<b>3131</b>
Stock change	0	0	0	0	0	0	0	0	0	0	0	0
Statistical difference	0	0	0	0	0	0	0	0	0	0	0	0
Refinery intake	0	0	0	0	0	0	0	0	0	0	0	0
Closing stocks	0	0	0	0	0	0	0	0	0	0	0	0



- Other (Primary) Direct use: what's this?
- The Demand of Other oil products increased at the same timing(coincidence?).

# Country: Venezuela

## Timeliness and completeness

### Timeliness

JAN-JUN 2014



JUL-Dec 2013



JAN-JUN 2013



JUL-DEC 2012



😊=Good, 😐=Fair, 😞=Poor

Regular data submission on M-1 basis

### Completeness

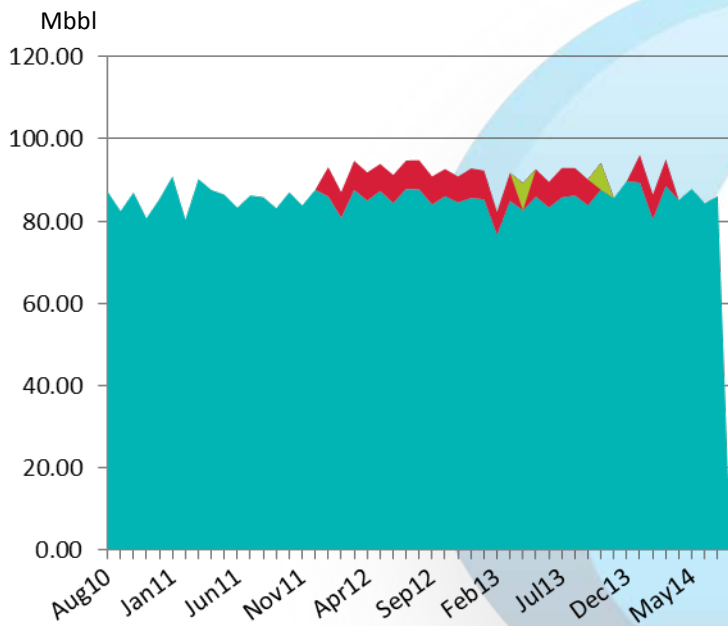
- In the extended format, complete data with some time delay become available.



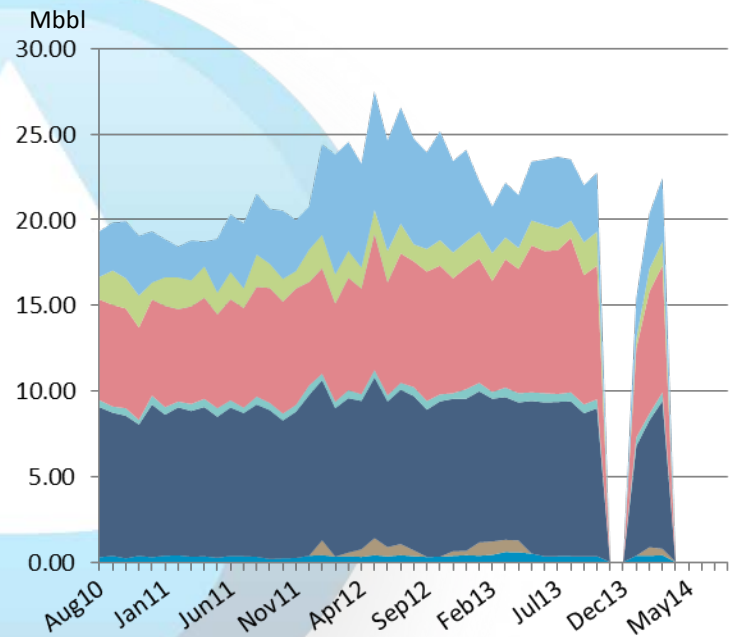
# Country: Venezuela

## Flow: Production, Demand

Production (Crude, NGL, Other)



Reported Demand (Oil products)



Crude oil NGL Other

LPG Naphtha Gasoline  
Kerosene Diesel Residual Fuel  
Other oil prods

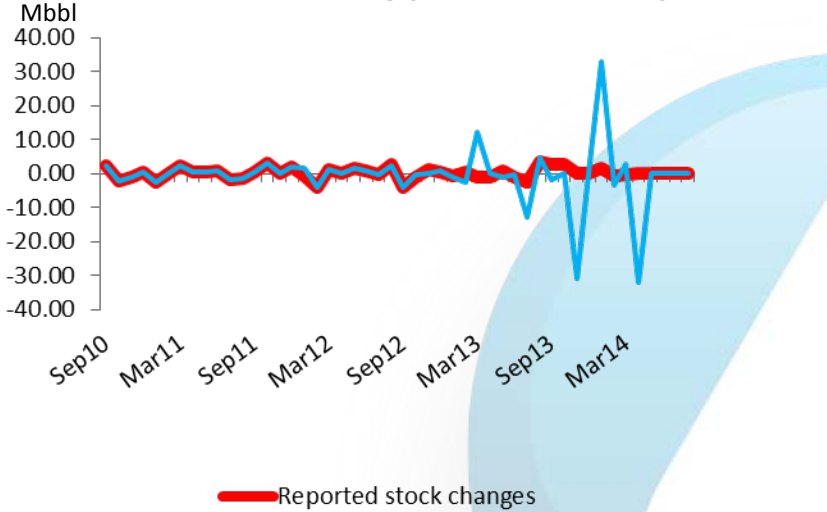
# Country: Venezuela

## Flow: Stocks

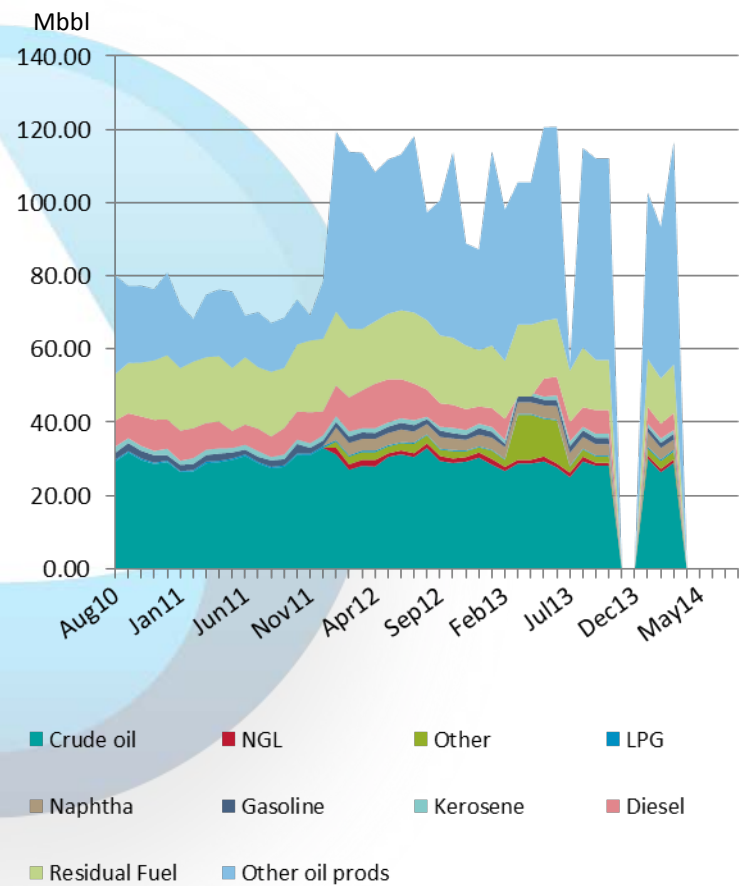
A Concrete Outcome of the Consumer - Producer Dialogue

JOINT ORGANISATIONS DATA INITIATIVE

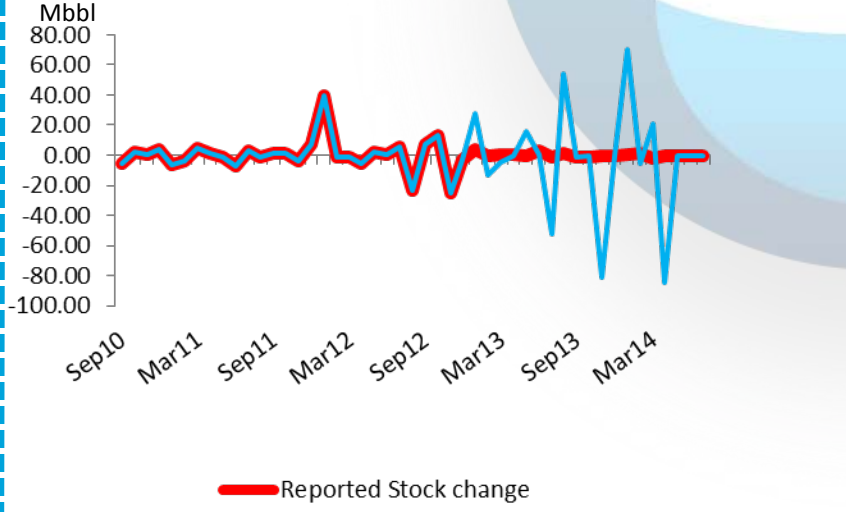
### Stock data consistency (Crude+NGL+Other)



### Stock level by product



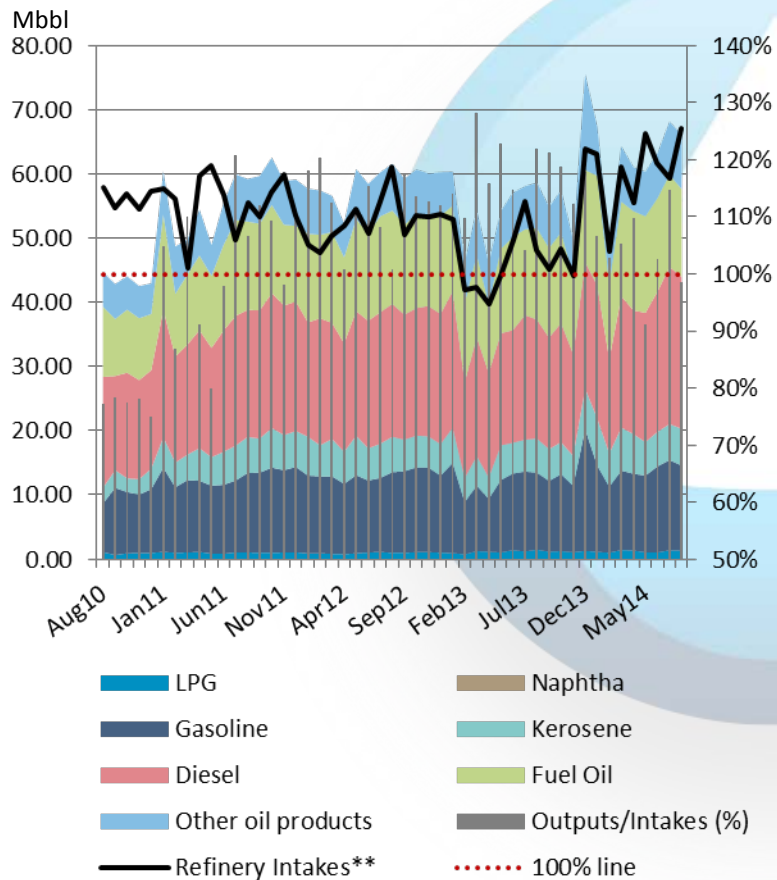
### Stock data consistency (Total oil products)



# Country: Venezuela

## Flow: Refinery

### Refinery outputs/intakes comparison



### Refinery input volume

