

# Monthly gas data collection

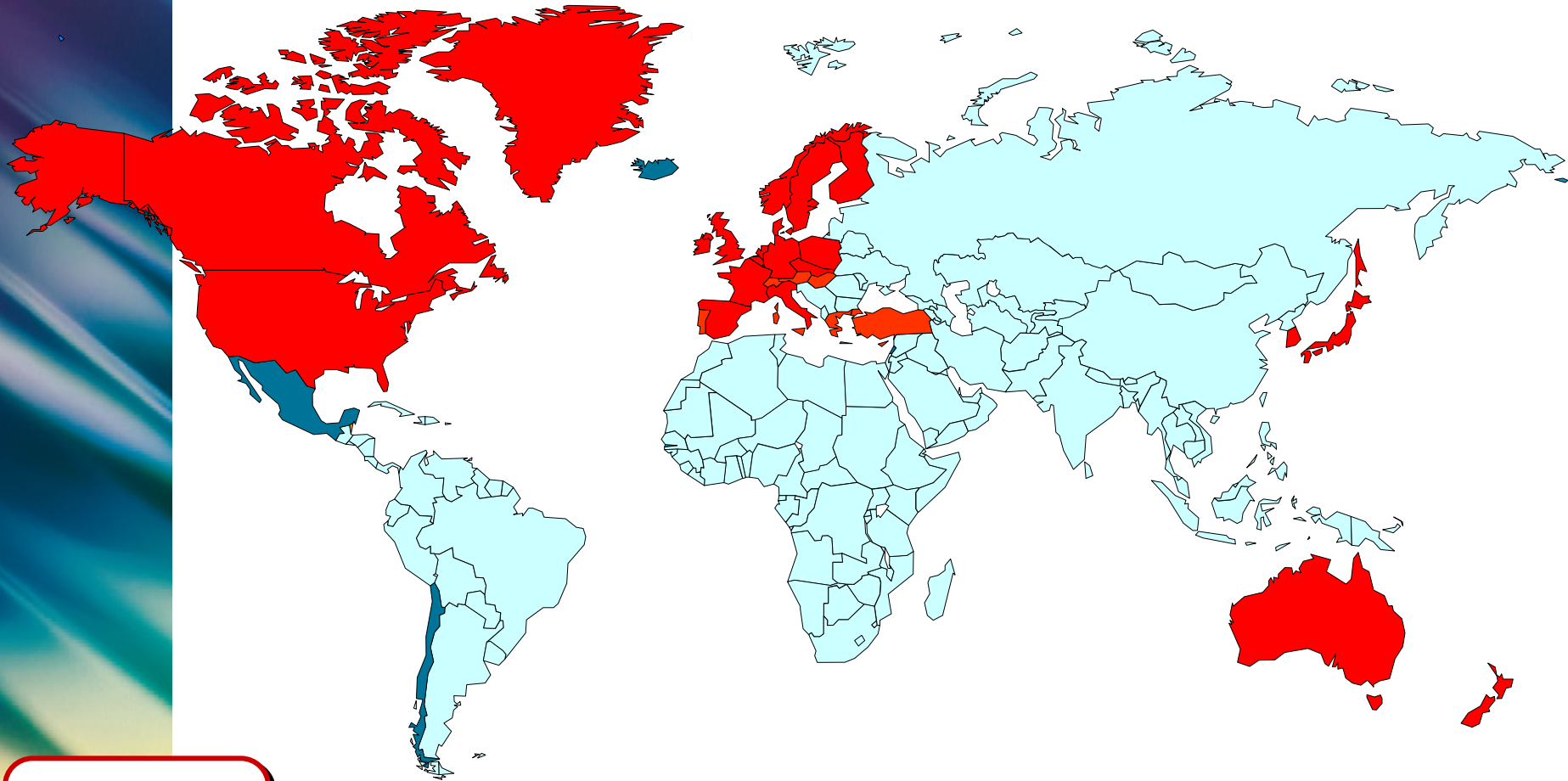
by IEA

**Mieke Reece**  
*Energy Statistics Division*



International  
Energy Agency

# OECD and IEA member countries



 IEA  
 OECD

- 28 IEA Members countries versus 34 OECD countries
- IEA collects energy data for 34 OECD countries

# What does the IEA collect in terms of monthly natural gas data?

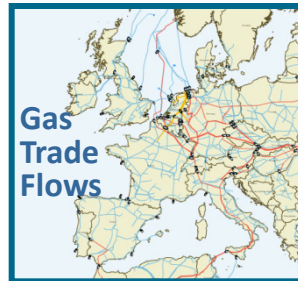
Three monthly natural gas data collection systems:

● **MOS**



Monthly Gas

● **GTF**



● **Gas JODI**



# Monthly Gas Statistics



Monthly Gas

- Monthly natural gas data reported as part of the Monthly Oil and Gas questionnaire (**MOS**)
- Data have been reported since January 1984
- Long experience in collecting monthly gas data
- Data on supply, demand and trade (origin & destination)
- M-2 data
- Monthly data used for market monitoring and basis for mid and longer term forecasts
- Available electronically in Monthly Gas Data Service

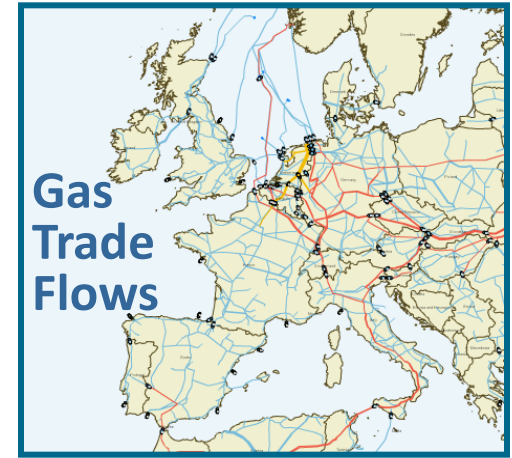
Gas data transparency conference, 22-23 May 2012, Doha, Qatar





# Monthly Gas Trade Flows

- Monthly gas trade flows reported since April 2006
- Launched to monitor physical trade flows in Europe
- M-1 data
- Data represented on a map with historical data downloadable in Excel format
- Data publicly and freely available on IEA website



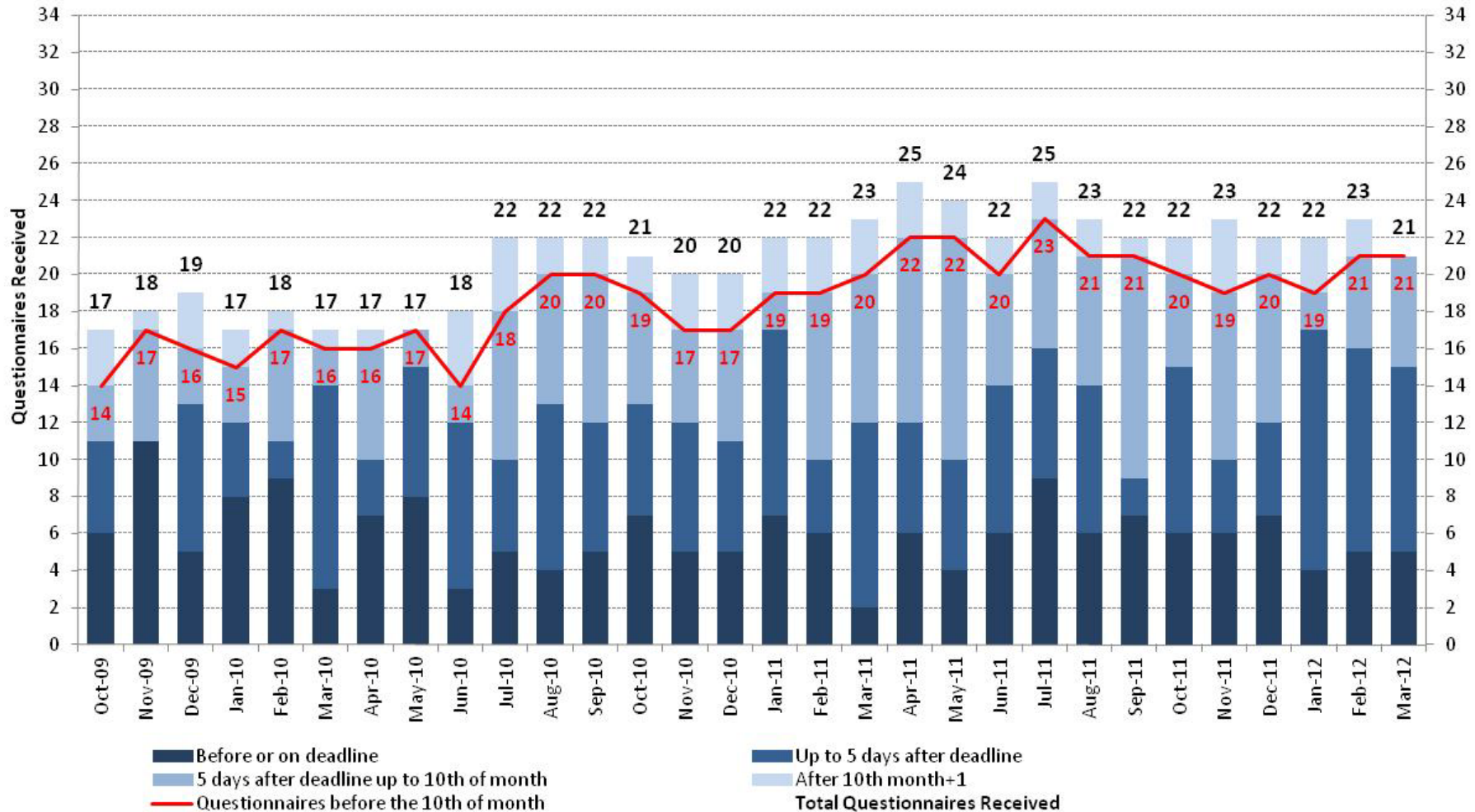
# Gas Jodi



- **Gas JODI – an exercise since October 2009**
- **Member countries were asked to volunteer in providing M-1 data on natural gas**
- **Questionnaire similar to existing Monthly Gas Questionnaire**
- **Gradual increase of participation – some major countries are not yet participating**

# Status of Gas Jodi : M-1

## OECD - JODI Gas Participation and Timeliness



# Specific questions



# Challenges in collecting monthly gas data – general points

## Timeliness, Sustainability, Completeness and Quality

- **Timeliness:** monthly deadline has to be respected
- **Sustainability:** all countries need to report every month
- **Completeness:** all data needs to be reported
- **Quality:**
  - Measurement: volume versus energy – gross versus net
  - Trade data
  - Confidentiality

**How is the IEA addressing these challenges?**

# How are these challenges addressed by IEA?

- **Timeliness:** monthly submission has become a routine – deadline 25<sup>th</sup> - countries not submitting are contacted
- **Sustainability:** all countries submit on a regular basis – exceptionally when there is a problem they are reminded and hierarchical superiors may be alerted if needed
- **Completeness:** very few data points, so generally not an issue
- **Quality:**
  - Continuous checking of data: balance, outliers etc
  - Comparison with external data
  - Problems detected are discussed with administrations

# Weak points of global monthly gas data

- **Currently not aware of global monthly gas data**
- **Lack of monthly data for major producers and consumers**
- **Not easy to have world totals on a monthly basis**
- **Data quality:**
  - **Definitions e.g. production including flaring and venting – marketed or wellhead?**
  - **Units of measurement – energy content is very different**
  - **Volume data depending on temperature**
  - **LNG often not considered as natural gas imports**
  - **Confidentiality**

# Would a monthly gas database guarantee improved transparency?

- Globalisation of the gas market is moving the need for more transparency forward
- But transparency should come from both sides: producers and consumers
- Moreover the effort needs to be sustained and data should be of good quality





# What could JODI Gas contribute?

- **More transparency in the global gas market**
- **Contribution to gas security**
- **Gas market becoming more global with LNG trade, therefore a need for a global system**
- **Currently not all gas producers and consumers report monthly data. Gas JODI would bring more timely data**
- **Global coverage is very important for market monitoring**



# JODI gas questionnaire

Are instructions and definitions clear enough?

- The questionnaire and the definitions have been agreed upon by the seven international organisations working on JODI
- Questionnaire small: minimum data required
- The definitions are already used internationally in the annual questionnaires (Eurostat, IEA, APEC) and monthly questionnaire (Eurostat, IEA)
- However there is a need for a manual and capacity building (as is done for JODI oil)



**Thank you**

