



I.R. IRAN

JODI OIL & JODI GAS

Data source for JODI-Oil questionnaire

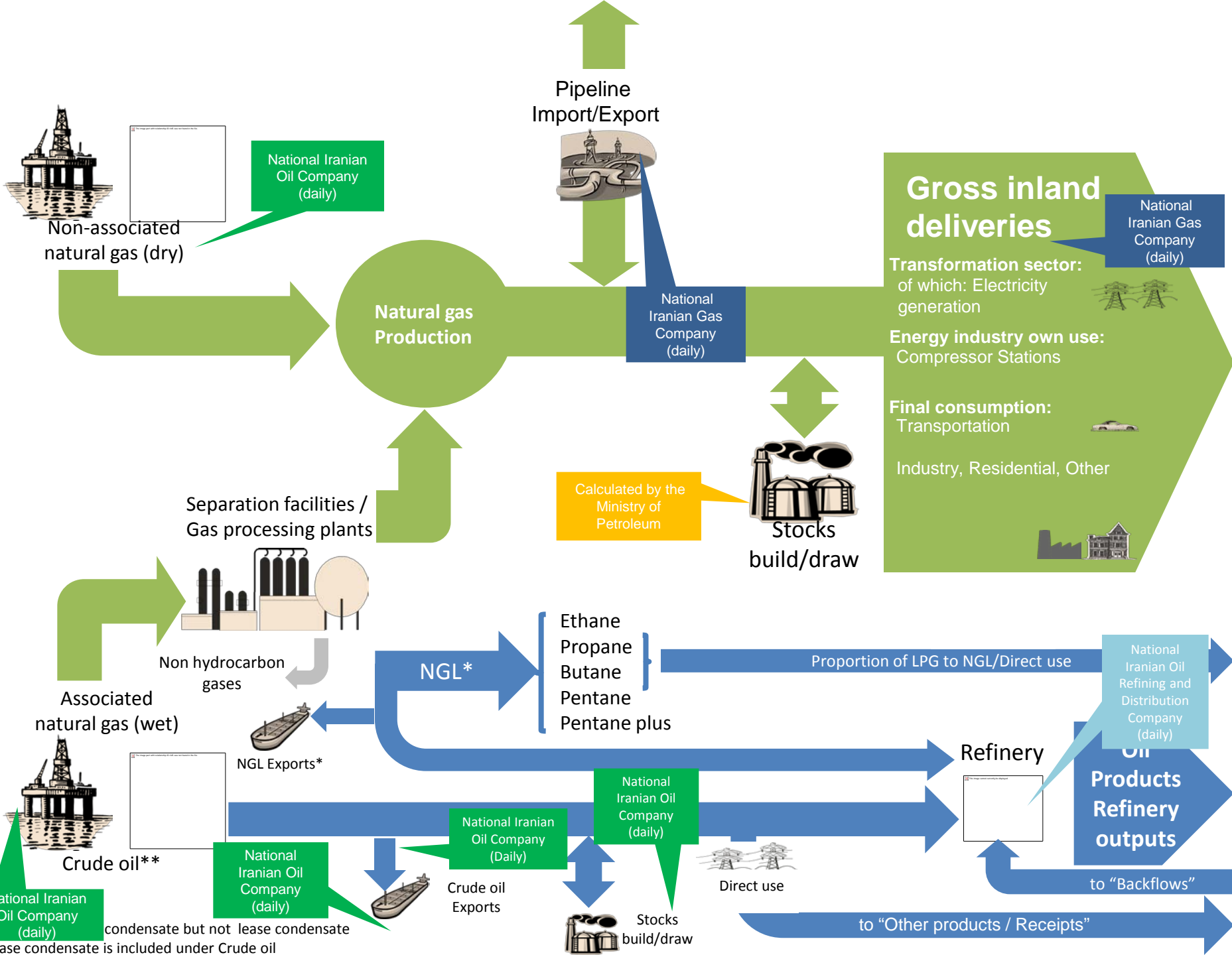
		Crude oil	NGL	Other	Total (1)+(2)+(3)
		(1)	(2)	(3)	(4)
+	Production	National Iranian Oil Company (NIOC)-Daily			
+	From other sources	Not Available			
+	Imports	Not Applicable			
-	Exports	National Iranian Oil Company (NIOC)-Daily			
+	Products Transferred/Backflows	Not Available			
-	Direct use	National Iranian Oil Company (NIOC)-Daily			
-	Stock change	National Iranian Oil Company (NIOC)-Daily			
-	Statistical difference	National Iranian Oil Company (NIOC)-Daily			
=	Refinery intake	National Iranian Oil Company (NIOC)-Daily			
	Closing stocks	National Iranian Oil Company (NIOC)-Daily			

Petroleum Products									
	LPG	Naphtha	Motor/ aviation gasoline	Kerosenes	Of which: Kerosene type jet fuel	Gas/ diesel oil	Fuel oil	Other oil products	Total oil products (5)+(6)+(7) +(8)+(10) +(11)+(12)
	(5)	(6)	(7)	(8)	(9)	(10)	(11)	(12)	(13)
+	Refinery output	National Iranian Oil Refining and Distribution Company (NIORDC)-Daily							
+	Receipts	National Iranian Oil Refining and Distribution Company (NIORDC)-Daily							
+	Imports	National Iranian Oil Company (NIOC)-Daily							
-	Exports	National Iranian Oil Company (NIOC)-Daily							
-	Products transferred	National Iranian Oil Refining and Distribution Company (NIORDC)-Daily							
+	Interproduct transfers	National Iranian Oil Refining and Distribution Company (NIORDC)-Daily							
-	Stock change	National Iranian Oil Refining and Distribution Company (NIORDC)-Daily							
-	Statistical difference	National Iranian Oil Refining and Distribution Company (NIORDC)-Daily							
=	Demand	National Iranian Oil Refining and Distribution Company (NIORDC)-Daily							
	Closing stocks	National Iranian Oil Refining and Distribution Company (NIORDC)-Daily							

Data source for JODI-Gas questionnaire

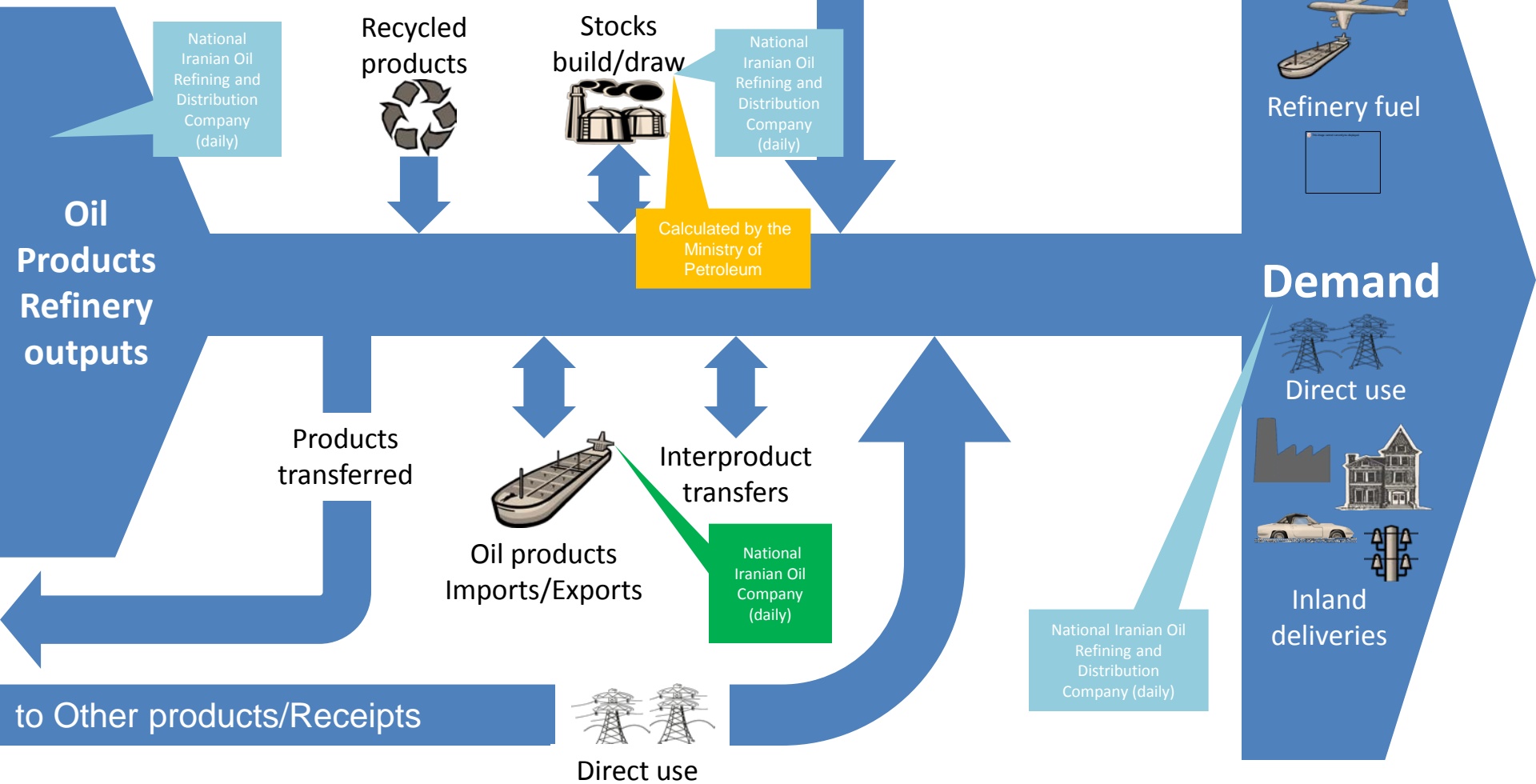
	Natural Gas in million m ³ (at 15°C, 760 mm hg)	Natural Gas in Terajoules	Natural Gas (LNG) in 1000 tons
Production	National Iranian Oil Company (NIOC)-daily	Not Available	Not Applicable
Receipts from Other Sources	Not Available	Not Available	Not Applicable
Imports	National Iranian Gas company (NIGC)-daily	Not Available	Not Applicable
LNG	Not Applicable		
Pipeline	National Iranian Gas company (NIGC)-daily	Not Available	Not Applicable
Exports	National Iranian Gas company (NIGC)-daily	Not Available	Not Applicable
LNG	Not Applicable		
Pipeline	National Iranian Gas company (NIGC)-daily	Not Available	Not Applicable
Stock Change	National Iranian Gas company (NIGC)-daily	Not Available	Not Applicable
Gross Inland Deliveries (Calculated)	Calculated by Ministry of Petroleum-daily	Not Available	Not Applicable
Statistical Difference (Calculated)	Calculated by Ministry of Petroleum-daily	Not Available	Not Applicable
Gross Inland Deliveries Observed	National Iranian Gas company (NIGC)-daily	Not Available	Not Applicable
of which: Electricity and Heat Generation	National Iranian Gas company (NIGC)-daily	Not Available	Not Applicable
Closing stocks	National Iranian Gas company (NIGC)-daily	Not Available	Not Applicable

Mass to volume conversion factor of LNG (if you have specific figure)	
m ³ /ton	LNG
Conversion factor	Not Applicable



LPG proportion from gas processing plants

to Other products/Receipts then Interproducts transfer to LPG



**Thank You For Your Kind
Attention**

Data source for JODI-Oil questionnaire (example)

	Crude oil	NGL	Other	Total (1)+(2)+(3)
	(1)	(2)	(3)	(4)
+ Production	National Petroleum Council (daily)			
+ From other sources			Not available or not sure	
+ Imports	National Oil Company (weekly)			
- Exports	National Oil Marketing Corp. (Monthly)			
+ Products Transferred/Backflows			Not available or not sure	
- Direct use	National Oil Marketing Corp. (Monthly)			
- Stock change				
- Statistical difference	0	0	0	0
= Refinery intake	National Oil Company (weekly)			
Closing stocks	National Oil Marketing Corp. (Monthly)			

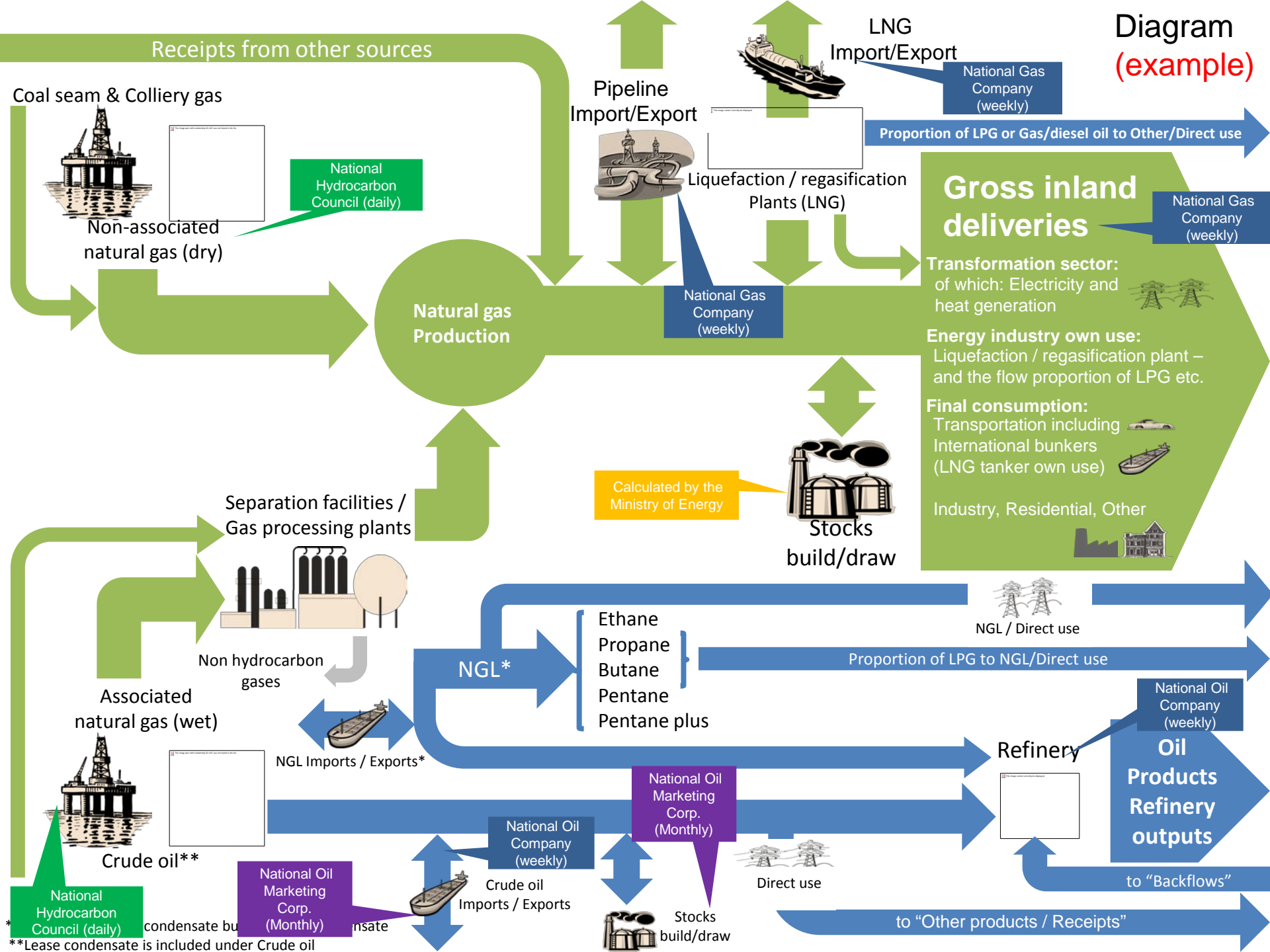
Petroleum Products									
	LPG	Naphtha	Motor/ aviation gasoline	Kerosenes	Of which: Kerosene type jet fuel	Gas/ diesel oil	Fuel oil	Other oil products	Total oil products (5)+(6)+(7) +(8)+(10) +(11)+(12)
	(5)	(6)	(7)	(8)	(9)	(10)	(11)	(12)	(13)
+ Refinery output	National Oil Company (weekly)								
+ Receipts	Not available or not sure								
+ Imports	National Oil Company (weekly)								
- Exports	National Oil Company (weekly)								
- Products transferred	Not available or not sure								
+ Interproduct transfers	Not available or not sure								
- Stock change	Calculated by the Ministry of Energy								
- Statistical difference	0	0	0	0	0	0	0	0	0
= Demand	National Oil Company (weekly)								
Closing stocks	National Oil Company (weekly)								

Data source for JODI-Gas questionnaire (example)

	Natural Gas in million m ³ (at 15°C, 760 mm hg)	Natural Gas in Terajoules	Natural Gas (LNG) in 1000 tons
Production	National Hydrocarbon Council (daily)	Not available or not sure	
Receipts from Other Sources	Not available or not sure		
Imports	National Gas Company (weekly)		
LNG	Not applicable		
Pipeline	National Gas Company (weekly)		
Exports	National Gas Company (weekly)		
LNG	Not available or not sure	National Gas Company (weekly)	
Pipeline	Not applicable		
Stock Change	Calculated by the Ministry of Energy	Not available or not sure	
Gross Inland Deliveries (Calculated)	0	0	
Statistical Difference (Calculated)	0	0	
Gross Inland Deliveries Observed	National Gas Company (weekly)		
of which: Electricity and Heat Generation			
Closing stocks			

Mass to volume conversion factor of LNG (if you have specific figure)	
m ³ /ton	LNG
Conversion factor	Not available or not sure

Diagram (example)



Receipts from other sources

Coal seam & Colliery gas



Non-associated natural gas (dry)

National Hydrocarbon Council (daily)

Pipeline Import/Export



Liquefaction / regasification Plants (LNG)

LNG Import/Export



National Gas Company (weekly)

Proportion of LPG or Gas/diesel oil to Other/Direct use

Gross inland deliveries

National Gas Company (weekly)

Transformation sector: of which: Electricity and heat generation



Energy industry own use: Liquefaction / regasification plant – and the flow proportion of LPG etc.

Final consumption: Transportation including International bunkers (LNG tanker own use)



Industry, Residential, Other



Natural gas Production

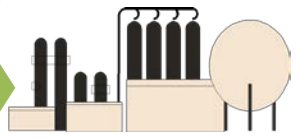
National Gas Company (weekly)

Calculated by the Ministry of Energy



Stocks build/draw

Separation facilities / Gas processing plants



Non hydrocarbon gases

Associated natural gas (wet)



Crude oil**

NGL Imports / Exports*



Ethane
Propane
Butane
Pentane
Pentane plus

NGL / Direct use

Proportion of LPG to NGL/Direct use

Refinery



Oil Products Refinery outputs

National Oil Company (weekly)

National Oil Marketing Corp. (Monthly)

National Oil Company (weekly)



Crude oil Imports / Exports

Direct use



Stocks build/draw

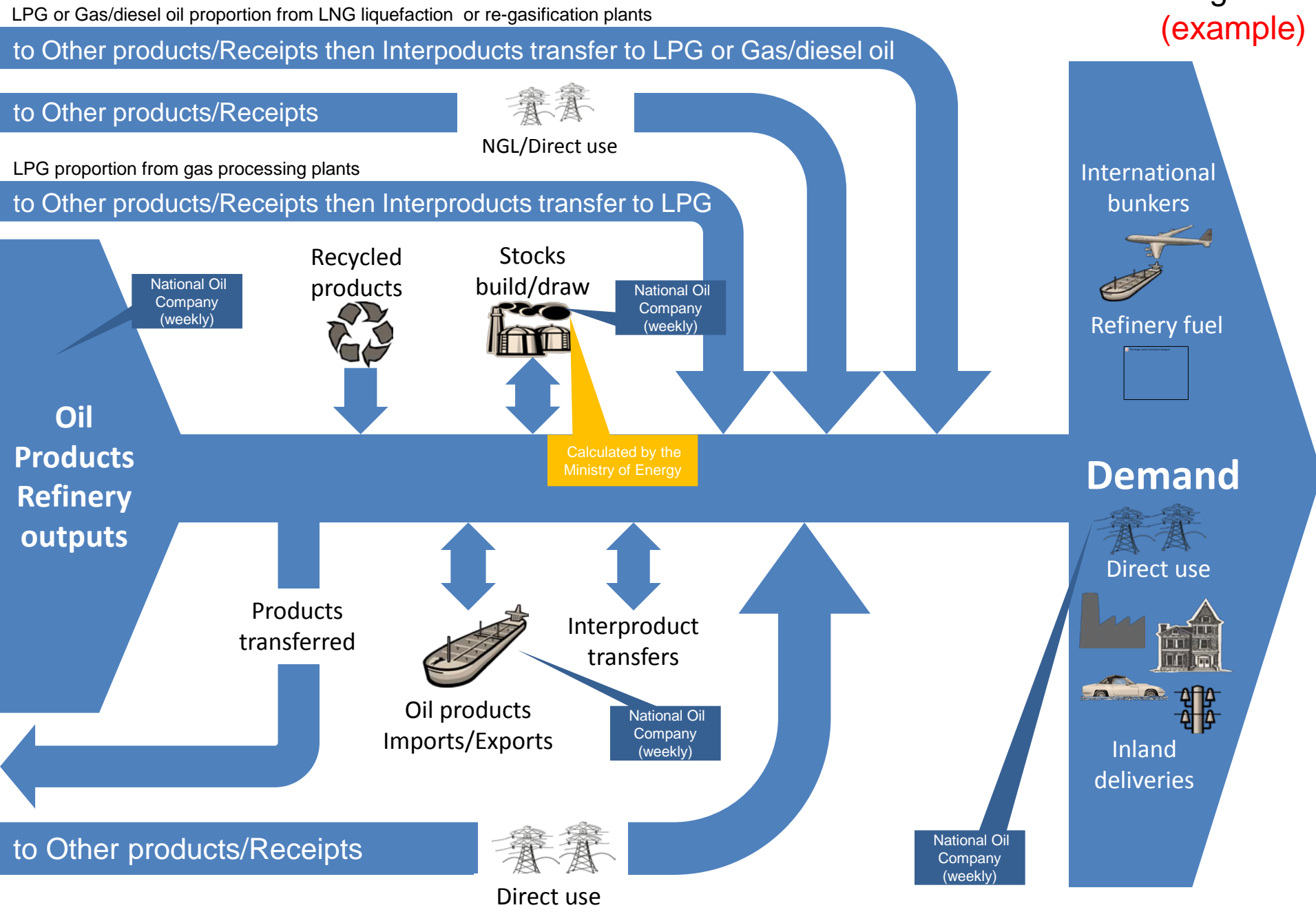
to "Other products / Receipts"

to "Backflows"

National Hydrocarbon Council (daily)

**Lease condensate is included under Crude oil

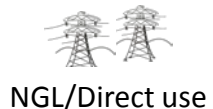
Diagram (example)



LPG or Gas/diesel oil proportion from LNG liquefaction or re-gasification plants

to Other products/Receipts then Interproducts transfer to LPG or Gas/diesel oil

to Other products/Receipts

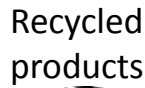


NGL/Direct use

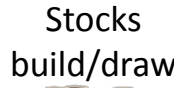
LPG proportion from gas processing plants

to Other products/Receipts then Interproducts transfer to LPG

National Oil Company (weekly)



Recycled products



Stocks build/draw

National Oil Company (weekly)

Calculated by the Ministry of Energy

Oil Products Refinery outputs

Products transferred



Oil products Imports/Exports

Interproduct transfers

National Oil Company (weekly)

International bunkers



Refinery fuel



Demand

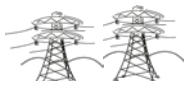


Direct use



Inland deliveries

to Other products/Receipts



Direct use

National Oil Company (weekly)